



Electronic Service Manuals

This electronic document is provided as a service to our customers. We do not create the contents of the information contained in this document. Should you have detailed questions pertaining to the information contained in this document, you may contact Michco, or the manufacturer which provided the original information in this electronic deliverable. Michco's only part in this electronic deliverable was the electronic assembly process. By providing this manual on line we are not guaranteeing parts availability.

You may contact Michco through the following methods:

Phone (517) 484-9312 or (800) 331-3339

2011 N. High St. -- Lansing, Michigan -- 48906

Fax: (517) 484-9836

Email: CustServe@Michco.com

Web site: www.Michco.Com

Parts Web site: www.FloorMachineParts.Com

Order Parts on Line at:

www.FloorMachineParts.Com

Directly to Parts & Service:

By Email: **Shop@Michco.com**

By Fax: (517) 702-2041

By Voice: Use numbers above.

Serving the Cleaning Industry Since 1922

Notice: All copyrighted material remains property of original owners, all trademarks are property of respective owners. Manuals are subject to Manufacturer's reproduction limitations. Originals or reproductions were provided by manufacturers through a request. We make no warranty as to the correctness of information provided in this document and you assume all risk. By placing these manuals on line we are not declaring our corporation to be an manufacturer authorized dealer or provider, please check our web site for authorized manufacturers we represent.

STEAMEX[®]

Manufactured by U.S. Floor Systems, Inc. • P.O. Box 30800 • Raleigh, NC 27622 • Telephone 919/782-0101
USA TOLL-FREE 1-800/334-5860 • FAX 919/781-2168

OPERATING AND PARTS MANUAL

Pro and C Series

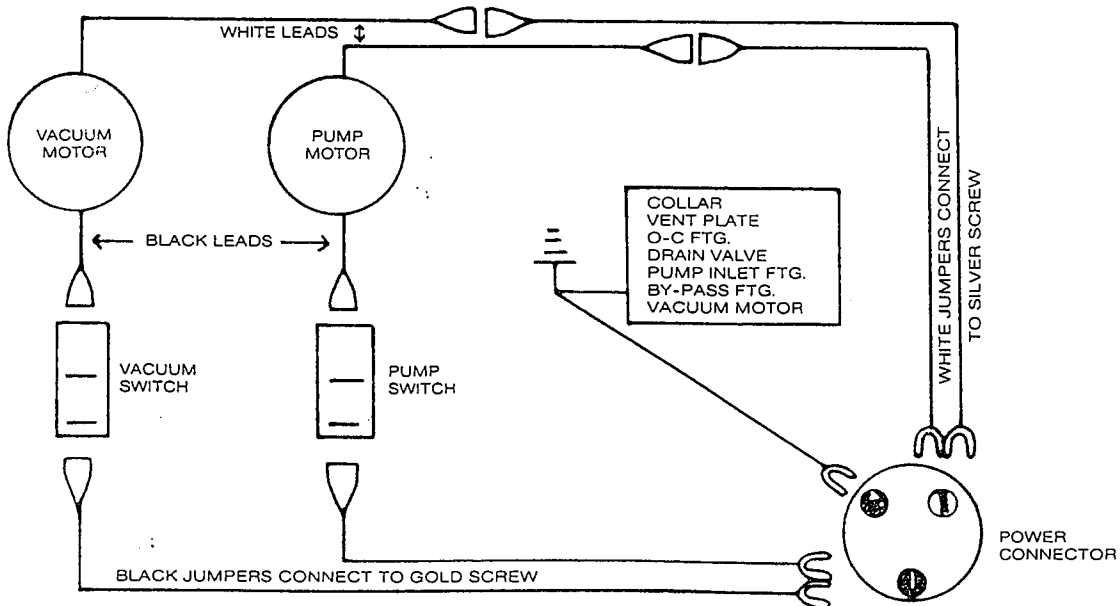


PARTS LIST PRO 7 & PRO 10

PARTS LIST PRO 12.5

ITEM	DESCRIPTION	PART #	QTY.	ITEM	DESCRIPTION	PART #	QTY.
1	Pro 7 Cabinet (w/Partition & Fittings)	S099P	1	1	Pro 12.5 Cabinet	S731P	1
2	Pro 10 Cabinet (w/Partition & Fittings)	S101P	1	2	Pro 12.5 Base	S734P	1
3	Thru-Hull Fitting	S102P	1	3	Thru-Hull Fitting	S102P	2
4	Vacuum Hose Coupling	S103P	1	4	Vacuum Hose Coupling	S103P	1
5	Power Cup	S107P	1	5	Round Vent Plate	S106P	1
6	100 PSI Diaphragm Pump	S122R	1	6	Power Cup	S107P	1
7	Large Caster	S130P	4	7	100 PSI Diaphragm Pump	S122R	1
8	30 PSI Pump /	S590P	1	8	30 PSI Pump	S590P	2
9	White Vinyl Bumper	S141P	1	9	Large Caster	S130P	4
10	Stand Pipe (Pro 7)	S160P	1	10	White Vinyl Bumper	S141P	1
11	Stand Pipe (Pro 10)	S163P	1	11	Reducing Washer	S165P	1
12	Access Gasket	S248P	1	12	Access Gasket	S248P	1
13	Gray Solution Hose	S250P	1	13	Access Plate	S279P	1
14	Access Plate	S279P	1	14	Blower Mount	S299P1	1
15	Blower Mount	S299P-1	1	15	Large Baffle	S300P	1
16	Large Spray Baffle	S300P	1	16	Pump Mounting Bracket	S303P	1
17	Base Plate Collar	S314P	1	17	Square Vent Plate	S321P	1
18	Base Plate	S315P	1	18	Drain Valve	S400P	1
19	Square Vent Plate	S321P	1	19	Drain Elbow	S400P-4	1
20	1/4" Threaded Fem. Quick Connect	S813P-1	1	20	Lock Nut	S400P-5	1
21	3/4"-16 Hex Nut	S814P	1	21	O-Ring	S400P-6	1
22	Drain Valve	S400P	1	22	Blower Sealing Ring	S446P	1
23	Drain Elbow	S400P-4	1	23	Pump Intake Elbow	S452P	1
24	Lock Nut	S400P-5	1	24	Offset Hinge	S500N-1	1
25	O-Ring	S400P-6	1	25	Power Switch	S519P	2
26	Blower Sealing Ring	S446P	1	26	Float Assembly	S528P	1
27	Pump Intake Elbow	S452P	1	27	3-Stage Vacuum	S611P	1
28	Offset Hinge	S500N-1	1	28	Molded Strainer	S626P-TV	1
29	Power Switch	S519P	2	29	Electrical Panel	S652A	1
30	Float Assembly	S528P	1	30	Sonex Foam	S702P	1
31	3-Stage Vacuum	S611P	1	31	Handle	S705P	2
32	2-Stage Vacuum	S311P	1	32	12.5 Standpipe Assembly	S721P	1
33	Molded Strainer	S626P-TV	1	33	Float Cap Assembly	S722P	1
34	Electrical Panel	S652A	1	34	Side Bracket	S724P	4
35	Float Cap Assembly	S722P	1	35	1/4" Threaded Female Quick Connect	S813P-1	1
36	Molded Exhaust Duct	S917P	1	36	3/4"-16 Hex Nut	S814P	1
37	1/4" x 3/8" Barb Fitting	S974P	3	37	1/4" x 3/8" Barb Fitting	S974P	3
38	Floor Flange	S997P	1	38	Floor Flange	S997P	1
39	1/4" 90° Elbow	T4027	2	39	1/4" 90° Elbow	T4027	2

WIRING DIAGRAM



TROUBLESHOOTING

ELECTRICAL

Pro 7, 10 & 12.5 machines draw a little less than 13 amps of electricity, therefore, any overloaded electrical circuits can adversely affect performance. It is recommended that, when possible, the 115 volt power outlet on an electric range or the 115 volt outlet for an air conditioner be used to operate the machine. USE GROUNDED OUTLET ONLY.

PROBLEM	PROBABLE FAULT	SUGGESTED ACTION
1. Both pump and blower will not run.	1. Blown fuse or tripped circuit breaker.	1. Replace or reset as required.
	2. Faulty or damaged power cord.	1. Check power cord for signs of damage and replace if necessary
	3. Bad connection between power cord and switches or power cord and motors.	1. Check connections and correct as necessary.
2. Pump or blower will not run when their respective switch is pushed on.	1. Bad connection between switch and motor.	1. Check connections and correct as necessary.
	2. Defective switch.	1. Check and replace as necessary.
	3. Worn brushes.	1. Replace brushes.
	4. Bad motor.	1. Replace motor.
3. Motor starts initially and stops after short run.	1. Interrupted connection in electrical system.	1. Check connections in unit.
		2. Plug power cord in another wall socket.
		3. Check fuse or circuit breakers.
2. Thermal cut-out switch (pump) in motor opening.	1. Check for obstructions in air flow through pump.	2. Check for worn brushes, replace if worn.
4. Unit continues to blow fuses or trip circuit breakers.	1. Circuit is overloaded.	1. Eliminate other power requirements from circuit while using machine.
	2. Short within machine.	1. Check connections and components.

VACUUM

The vacuum system determines how much of the water, detergent and dirt the Pro 7, 10 and 12.5 machines recover from carpets. This vacuum system must be operating at top efficiency to provide the best possible cleaning.

PROBLEM	PROBABLE FAULT	SUGGESTED ACTION
1. Motor running, little or no vacuum at pick up end of wand.	1. Drain valve open.	1. Check drain valve; must be closed.
	2. Leak in vacuum system.	1. Access plate must be sealed. Check vacuum hose and fittings at machine, wand handle, and wand head. Repair or replace as required.
2. Not enough vacuum power at the machine vacuum hose coupling.	1. Leak in machine.	1. Check air flow when vacuum hose connecton at the machine is sealed. There should be no measurable air flow at the exhaust. If so, there is an air leak at (1) hose connections (tighten); (2) access cover; (3) drain valve; (4) blower intake sealing or (5) cracks or breaks in cabinet, internally or externally, (reglass or contact distributor or U.S. FLOOR SYSTEMS INC., Customer Service Dept.)
	2. Blockage of exhaust.	1. Check vacuum exhaust for blockage. Remove if found. Check air flow by removing hose from machine and feeling exhaust under machine. (Should be strong blast.) If not, there is an obstruction or faulty vacuum blower.
3. Motor running and no vacuum at all. No exhaust from blower.	1. Shut off valve closed.	1. Unscrew cap and clean cap, float and standpipe.
	2. Faulty vacuum blower.	1. Replace blower.
4. Shut-off valve failing to release after recovery tank is drained.	1. Shut-off valve coated with detergent or other foreign material.	1. Remove valve cap and clean cap, float, and standpipe.
5. Water coming out of exhaust port.	1. Foam from carpet by-passing shut-off valve.	1. Use Defoamer in vacuum hose.
	2. Shut-off valve malfunction.	1. See 4—1—1.
	3. Leak in machine.	2. Be sure float will clear baffle. 1. Repair leak.

WATER PUMP AND SPRAYING SYSTEM

The water pump and spraying system must provide an even coverage of the carpet with enough pressure to penetrate carpet pile, loosen and dissolve soil. Clean, hot water and the proper cleaning compounds are essential to maintain good performance from this system. NOTE: Some water must be in the solution tank when the pump motor is running.

PROBLEM	PROBABLE FAULT	SUGGESTED ACTION
1. Motor running—no spray through jet.	1. Pump not primed.	1. With pump running, press male quick connect of a connected solution hose against bottom of a bucket to allow to escape.
	2. Clogged jets or jet strainers.	1. Remove, soak and wash until clean.
	3. Clogged strainer in fresh water tank.	1. Check strainer and remove lint and all other foreign material from screen. Use CLEAN, hot water and proper cleaning compounds.
	4. Clogged or faulty solution control valve.	1. Remove solution hose from solution control valve. Check intake for lint or other foreign material.
	5. Clogged or faulty quick disconnect on cabinet.	1. Depress plunger on end of male quick disconnect on solution hose against inside wall of fresh water tank. If solution is flowing at this point, system is o.k. from here back through cabinet. If no solution is flowing, remove solution hose from quick disconnect on cabinet and check female disconnect for foreign material.
2. Uneven spray from jets.	1. Clogged or dirty jet orifice.	1. See 1—2—1.
3. Leaking solution control valve.	1. Foreign material in valve.	1. Remove stem bushing assembly, clean and reinstall.
	2. Valve seats or stem bushing worn.	1. Replace worn parts with solution control valve repair kit.
4. Leaking water pump.	1. Loose screws on pump.	1. Tighten screws.
	2. Leaking at seal. (Std. Pump)	1. Replace Impeller Assembly.
	3. Leaking at fittings.	2. Remove pump and motor and return to factory for repair. 1. Tighten—On by-pass line, remove clamp, cut line and reinstall clamp.
5. Pump pressure low.	1. Clogged strainer in fresh water tank.	1. See 1—3—1.
	2. Clogged Impeller. (Std. Pump)	1. Clean intake of Impeller.
	3. Obstruction in plumbing.	1. Check solution lines and fittings and clean as necessary.
	4. Clogged or leaking valves. (in optional pump)	1. Clean.
		2. Replace.

INTRODUCTION

STEAMEX CARPET EXTRACTORS are designed and manufactured to give many years of reliable performance with a minimum of maintenance and service required.

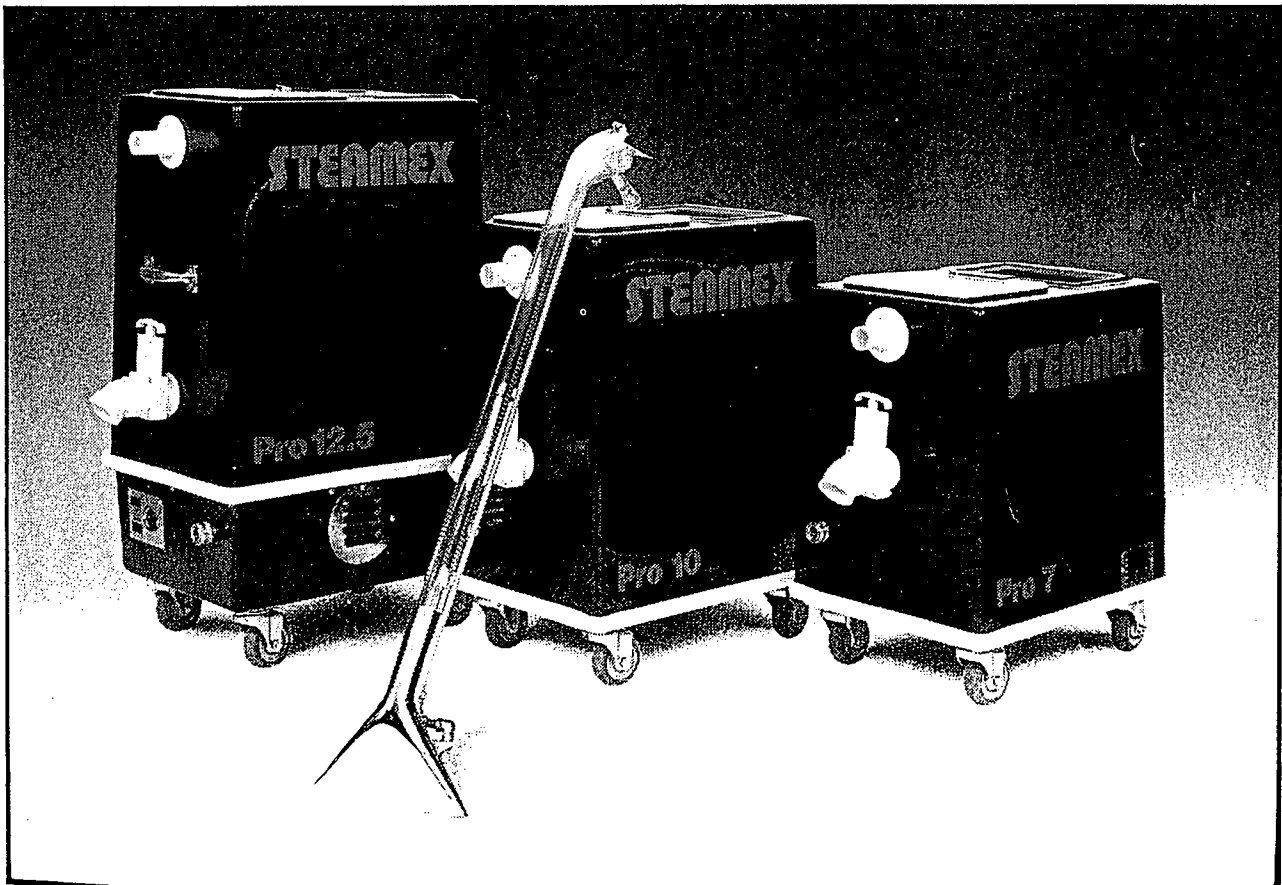
This manual is provided to assist in preparing the machine for operation and instruct the operator in safe operation of this machine.

Detailed Safety Instructions are provided for protection of the operator against electric shock and to insure optimum performance and longevity of the machine. Failure to follow these instructions could result in electric shock and/or damage to the machine.

Though STEAMEX CARPET EXTRACTORS require very little maintenance and service, some routine service is required to assure long life and the desired high level of performance.

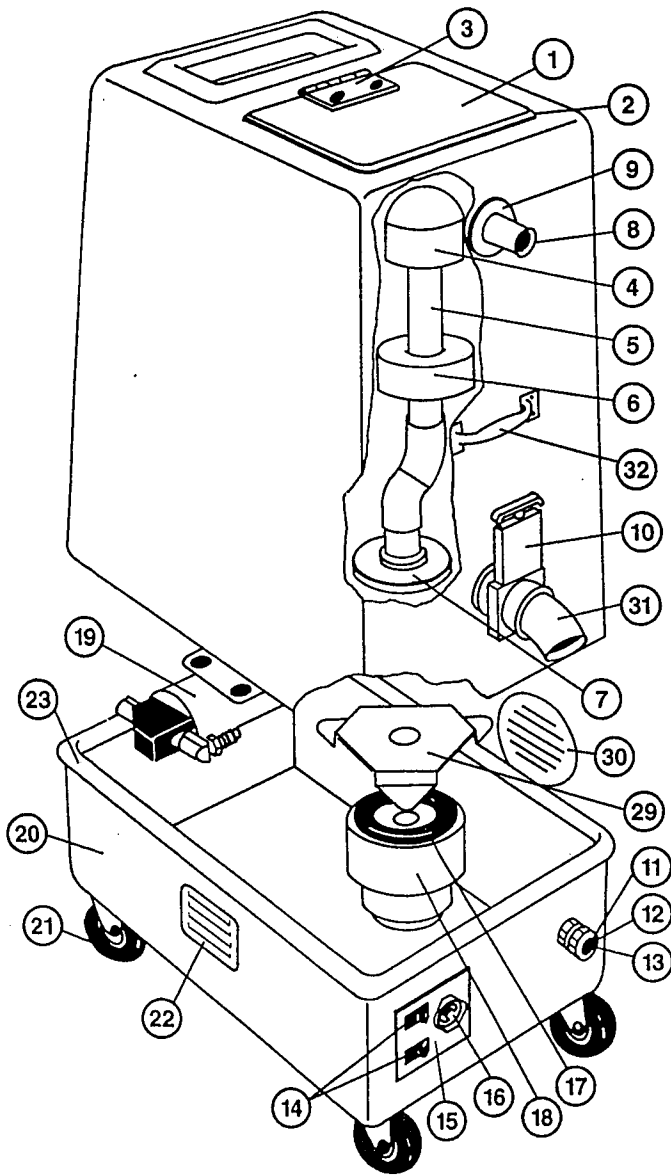
A variety of tools and accessories is available for use with your STEAMEX EXTRACTOR. Specific information is provided about these tools and proper use and attachment to the machine.

Warranty service, replacement parts and accessories are available through your Local Steamex Distributor. A complete parts list and illustrations are provided within this manual to assist in ordering replacement parts when needed.



PARTS LISTINGS

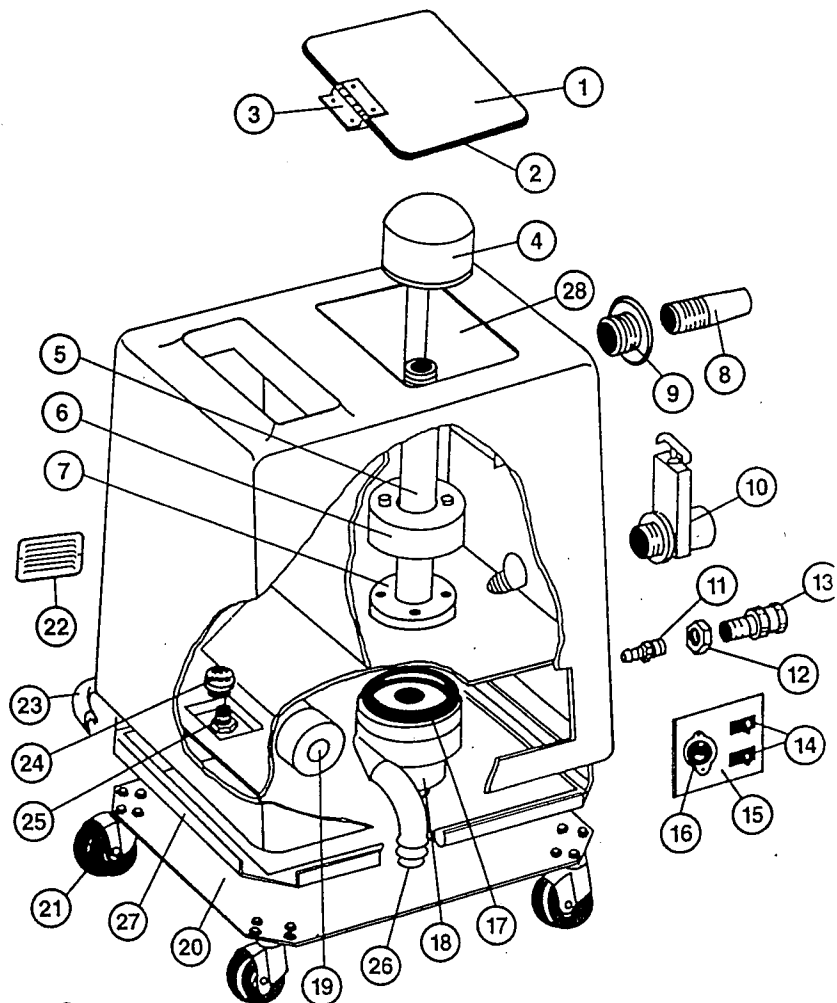
Complete parts listings with illustrations are provided in this manual. Contact your local STEAMEX Distributor for parts availability and pricing information.



Pro 12.5

PARTS DRAWINGS

C-2, C-3
Pro 7 and Pro 10



213

PART NUMBER BY MACHINE

ITEM #	DESCRIPTION	C-2	C-3	PRO 7	PRO 7 3/100	PRO 10	PRO 10 3/100	PRO 12.5	PRO 12.5 3/100
1	Access Plate	S279P	S252N	S279P	S279P	S279P	S279P	S279P	S279P
2	Access Plate Gasket	S248P	S249P	S248P	S248P	S248P	S248P	S248P	S248P
3	Access Plate Hinge	S500N1	S500N1	S500N1	S500N1	S500N1	S500N1	S500N1	S500N1
4	Float Cap Assembly	S722P	S538P	S722P	S722P	S722P	S722P	S722P	S722P
5	Standpipe Assembly	S160P	S523P	S160P	S160P	S163P	S163P	S721P	S721P
6	Float Assembly	S528P	S528P	S528P	S528P	S528P	S528P	S528P	S528P
7	Floor Flange	S997P	S997P	S997P	S997P	S997P	S997P	S997P	S997P
8	Vacuum Hose Coupling	S103P	S103P	S103P	S103P	S103P	S103P	S103P	S103P
9	Thru-Hull Fitting	S102P	S102P	S102P	S102P	S102P	S102P	S102P	S102P
10	Drain Valve	S400P	S400P	S400P	S400P	S400P	S400P	S400P	S400P
10A	Lock Nut (not shown)	S400P5	S400P5	S400P5	S400P5	S400P5	S400P5	S400P5	S400P5
10B	"O" Ring (not shown)	S400P6	S400P6	S400P6	S400P6	S400P6	S400P6	S400P6	S400P6
11	1/4" to 3/8" barb	S974P	S974P	S974P	S974P	S974P	S974P	S974P	S974P
12	3/4" — 16 Hex Nut	S814P	S814P	S814P	S814P	S814P	S814P	S814P	S814P
13	1/4" Threaded Fem. Quick Conn.	S813P1	S813P1	S813P1	S813P1	S813P1	S813P1	S813P1	S813P1
14	Power Switch	A13512	A13512	A13512	A13512	A13512	A13512	A13512	A13512
15	Switch Plate	S281P	S281P	S281P	S652P	S281P	S652P	S652P	S652P
16	Power Cup (Twist Lock)	S107P	S107P	S107P	S107P	S107P	S107P	S107P	S107P
17	Blower Ring Seal	S446P	S446P1	S446P1	S446P	S446P	S446P	S446P	S446P
18	Blower	S311P	S322P	S311P	A13504	S311P	A13504	S311P	A13504
19	Pump	S590P	S590P	S590P	S122R	S590P	S122R	S590P	S122R
20	Base Assembly/Plate	S315P	S242N	S315P	S315P	S315P	S315P	S734P	S734P
21	Caster	S231P	S514P	S130P	S130P	S130P	S130P	S130P	S130P
22	Square Vent Plate	S321P	S321P	S321P		S321P		S321P	
23	White Vinyl Bumper	S141P	S141P	S141P	S141P	S141P	S141P	S141P	S141P
24	Moulded Strainer	S626P	S626P	S626P	S626P	S626P	S626P	S626P	S626P
25	Brass Elbow	S452P	S452P	S452P	S452P	S452P	S452P	S452P	S452P
26	Exhaust Duct, Moulded	S917P	S917P	S917P	S917P	S917P	S917P	S917P	S917P
27	Base Collar	S314P	S243N	S314P	S314P	S314P	S314P	S314P	
28	Spray Baffle	S300P	S553P	S300P	S300P	S300P	S300P	S300P	S300P
29	Blower Bracket	S595P	S299P	S595P	S595P	S595P	S595P	S595P	S595P
30	Round Vent							S106P	S106P
31	Drain Valve Elbow 45°	S400P4	S400P4	S400P4	S400P4	S400P4	S400P4	S400P4	S400P4
32	Handle							S705P	S705P
33	By Pass Hose (BY FOOT)	S928P	S928P	S928P		S928P		S928P	
34	Pump Bracket	S303P	S303P	S303P	S303P	S303P	S303P	S303P	S303P
35	Internal Hoses (Grey) (BY FOOT)	S250P	S250P	S250P	S250P	S250P	S250P	S250P	S250P
36	Base Latch (2 required)							S900A	S900A
37	Clasp (2 required)							S777N	S777N
38	By Pass Hose Pump to Junction (order 6" piece)	S307P	S307P	S307P		S307P		S307P	
39	Hose Clamp for Exhaust Duct	S216P	S216P	S216P	S216P	S216P	S216P	S216P	S216P
40	Solution Hose Clamps	S453P	S453P	S453P	S453P	S453P	S453P	S453P	S453P
41	Electrical Cover			S269P					

ACCESSORIES

Power Cord	F217W	Vacuum Hose 15 Ft.	F215W	Solution Hose 15 Ft.	F213W2
Wand 12" 2 Jet	F202W	Wand 12" 1 Jet	F273W1	Hand Tool 4"	F203W1
Stair Tool 9"	F454W	Upholstery Tool 4"	F320W1	Carry Bag (Nylon Mesh)	S411P
Whirlwind Drying Fan	F410W				

STORAGE

The supply and recovery tanks should both be empty when storing your machine. The recovery tank should always be rinsed with clean water and then drained to prevent offensive odors and to prolong the life of the cabinet.

It is recommended that the machine not be stored around sharp objects that may damage the cabinet. Objects should not be stacked on top of the cabinet.

The machine should always be stored in a dry, protected area, at temperatures above freezing. If the machine is left in a vehicle overnight in subfreezing temperatures after recent usage, any water left in the brass quick-connection for the solution line may expand and crack the brass fitting.

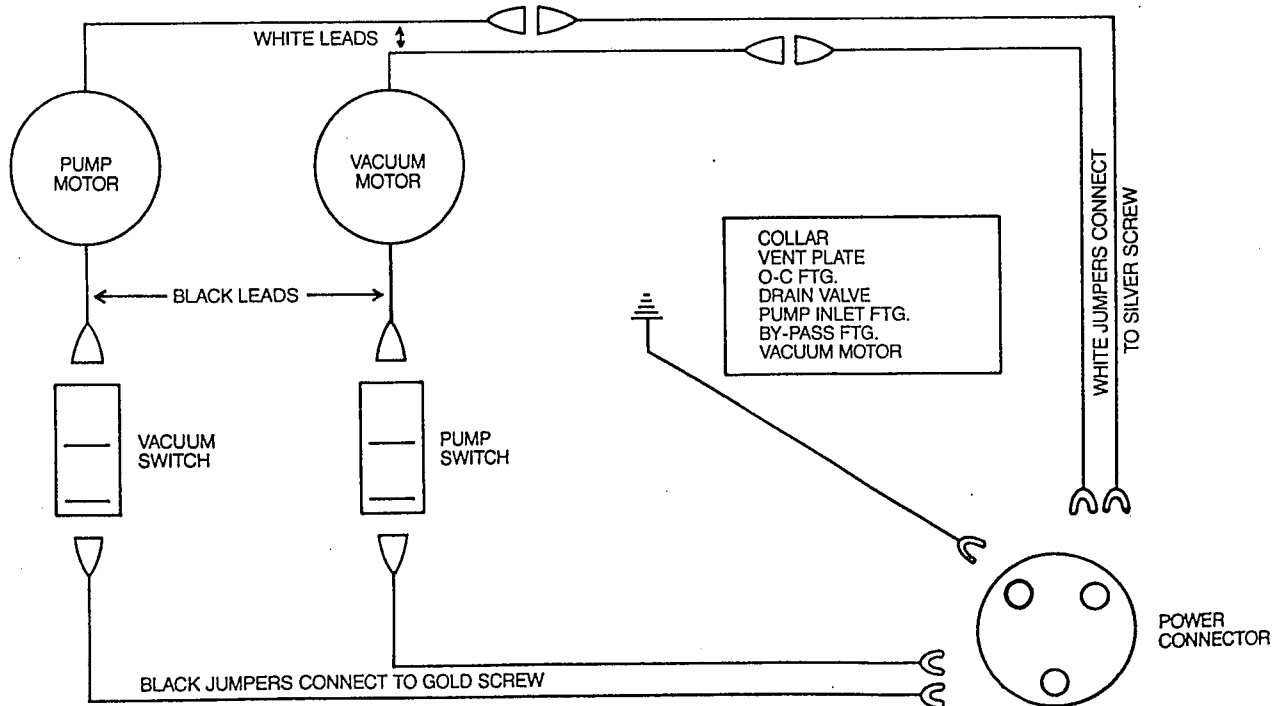
WARRANTY

STEAMEX PRO and C SERIES EXTRACTORS are warranted against defects in material and workmanship for a period of one (1) year from the registered date of purchase.

Failure to follow the recommended Safety, Operational or Maintenance Procedures outlined in this manual can void the warranty and result in damage to the machine.

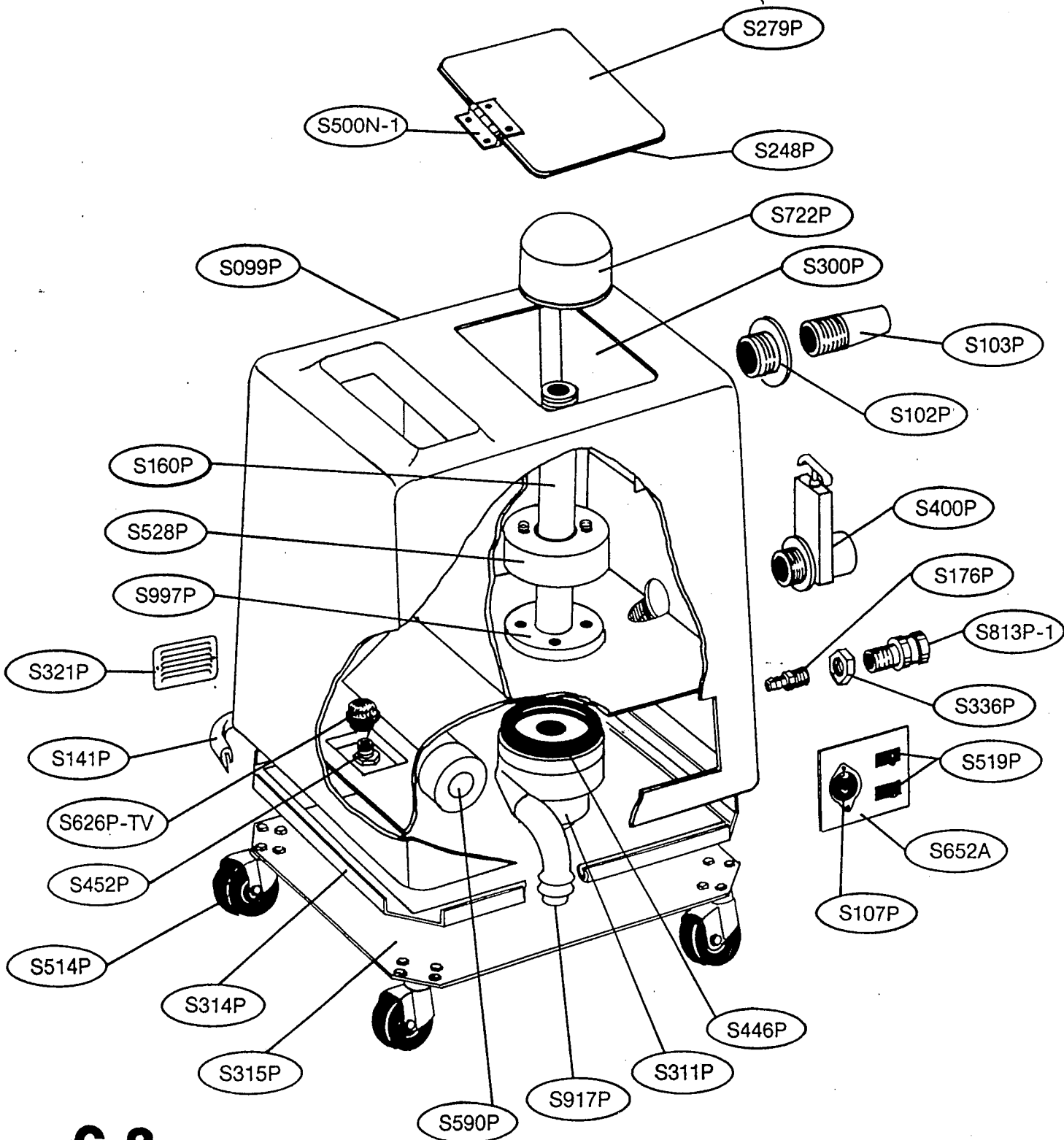
Warranty registration information is provided separate from this manual. Contact your local distributor of U.S. Floor Systems for additional information and obtain warranty service.

WIRING DIAGRAM



PARTS DRAWINGS

*check no holes
draw*



C-2 PARTS LIST

ITEM	DESCRIPTION	PART #	QTY.
1	Cabinet (w/Partition & Fittings)	S099P	1
2	Thru-Hull Fitting	S102P	1
3	Vacuum Hose Coupling	S103P	1
4	Power Cup	S107P	1
5	Caster	S514P	4
6	30 PSI Pump	S590P	1
7	White Vinyl Bumper	S141P	1
8	Stand Pipe	S180P	1
9	Access Gasket	S248P	1
10	Solution Hose	F213W	1
11	Vacuum Hose	F215W	1
12	Access Plate	S279P	1
13	Blower Mount	S299P-1	1
14	Large Spray Baffle	S300P	1
15	Base Plate Collar	S314P	1
16	Base Plate	S315P	1
17	Square Vent Plate	S321P	1
18	1/4" Threaded Fem. Quick Connect	S813P-1	1
19	3/4"-16 Hex Nut	S814P	1
20	Drain Valve	S400P	1
21	Drain Elbow	S400P-4	1
22	Lock Nut	S400P-5	1
23	O-Ring	S400P-6	1
24	Blower Sealing Ring	S446P	1
25	Pump Intake Elbow	S452P	1
26	Offset Hinge	S500N-1	1
27	Power Switch	S519P	2
28	Float Assembly	S528P	1
29	2-Stage Vacuum	S311P	1
30	Molded Strainer	S626P-TV	1
31	Electrical Panel	S652A	1
32	Float Cap Assembly	S722P	1
33	Molded Exhaust Duct	S917P	1
34	1/4" x 3/8" Barb Fitting	S974P	3
35	Floor Flange	S997P	1
36	1/4" 90° Elbow	T4027	2
37	Instruction Decal	S409P	1
37	Vacuum Hose Bag	S411p	1

WIRING DIAGRAM

