



# Electronic Service Manuals

This electronic document is provided as a service to our customers. We do not create the contents of the information contained in this document. Should you have detailed questions pertaining to the information contained in this document, you may contact Michco, or the manufacturer which provided the original information in this electronic deliverable. Michco's only part in this electronic deliverable was the electronic assembly process.

You may contact Michco through the following methods:  
Phone (517) 484-9312 or (800) 331-3339 MI, OH, IN only  
2011 N. High St. -- Lansing, Michigan -- 48906  
Fax: (517) 484-9836  
Email: [CustServ@Michco.com](mailto:CustServ@Michco.com)  
Web site: [www.Michco.Com](http://www.Michco.Com)  
Parts Web site: [www.FloorMachineParts.Com](http://www.FloorMachineParts.Com)

Order Parts on Line at:  
**[www.FloorMachineParts.Com](http://www.FloorMachineParts.Com)**

Directly to Parts & Service:  
By Email: **[Shop@Michco.com](mailto:Shop@Michco.com)**  
By Fax: (517) 702-2041  
By Voice: Use numbers above.

**Serving the Cleaning Industry Since 1922**

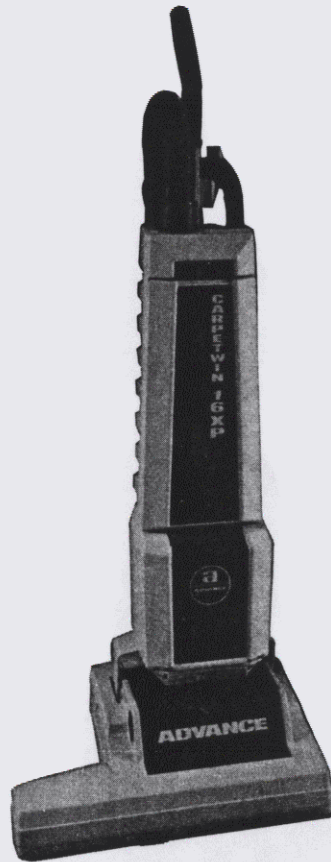
Notice: All copyrighted material remains property of original owners, all trademarks are property of respective owners. Manuals are subject to Manufacturer's reproduction limitations. Originals or reproductions were provided by manufacturers through a request. We make no warranty as to the correctness of information provided in this document and you assume all risk.

# CARPETWIN 16XP

MODELS 323002, 323015, 323006

THIS PARTS LIST IS FOR MACHINES  
AFTER SERIAL NUMBER 445585

# PARTS LIST



**ADVANCE**  
**MACHINE COMPANY**

INTERNATIONAL HEADQUARTERS, Plymouth, MN 55447-3408  
EUROPE, Llantrisant, Pontyclun, Mid-Glamorgan CF7 8YZ Wales, United Kingdom  
CANADA, 1295 Crestlawn Drive, Mississauga, Ontario L4W 1A9



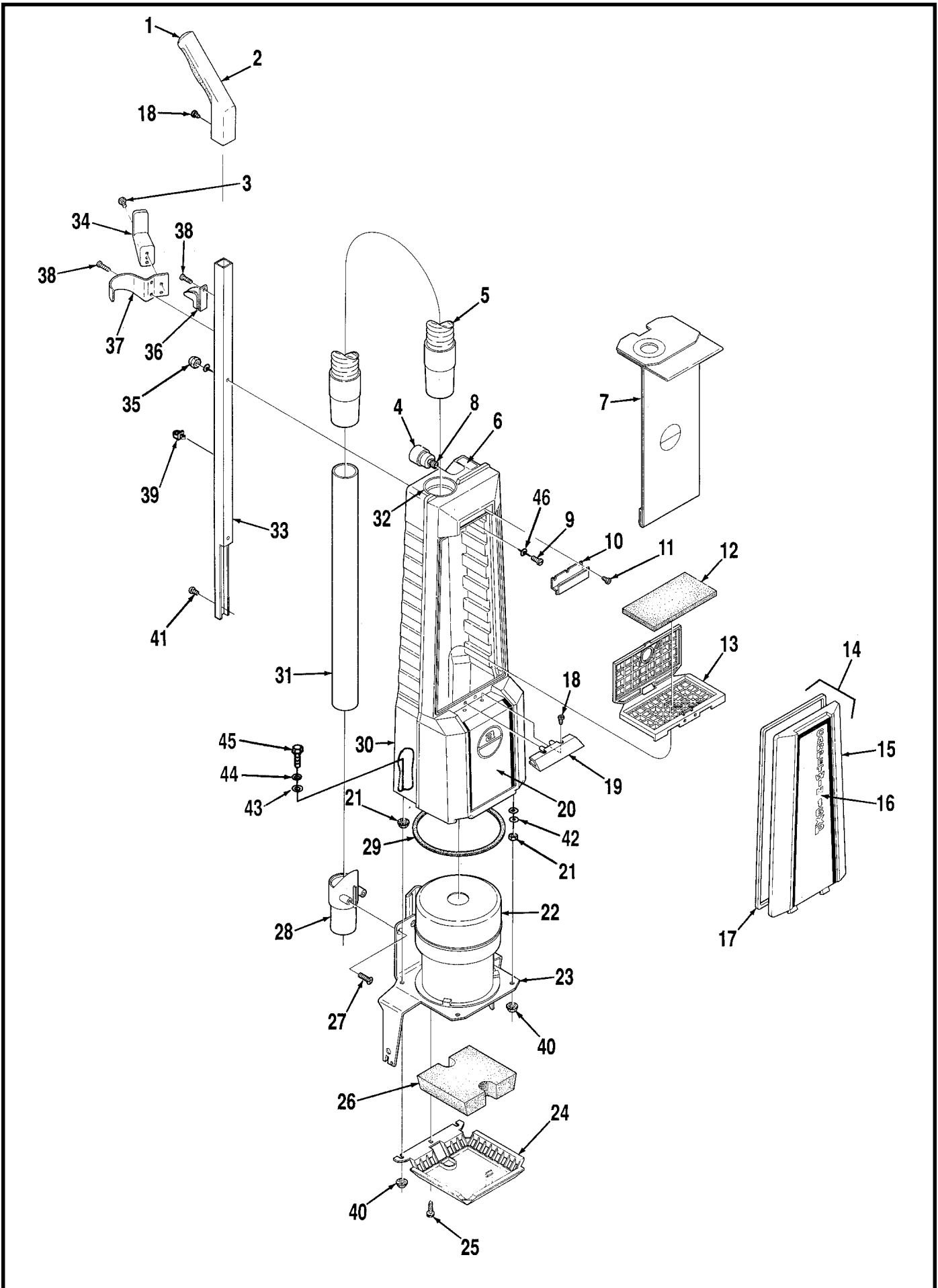
# TABLE OF CONTENTS

<u>DESCRIPTION</u>	<u>PAGE</u>
Upper Housing .....	1-2
Vacuum Motor Assembly .....	3-4
Base Assembly .....	5-6
Wiring Diagrams .....	7-8

## WHEN ORDERING PARTS

- \* Use the 6 digit numbers from the "Part No." columns in this parts list.
- \* Specify the model and serial number of the machine.
- \* Use the space below to record the model and serial number for future reference.

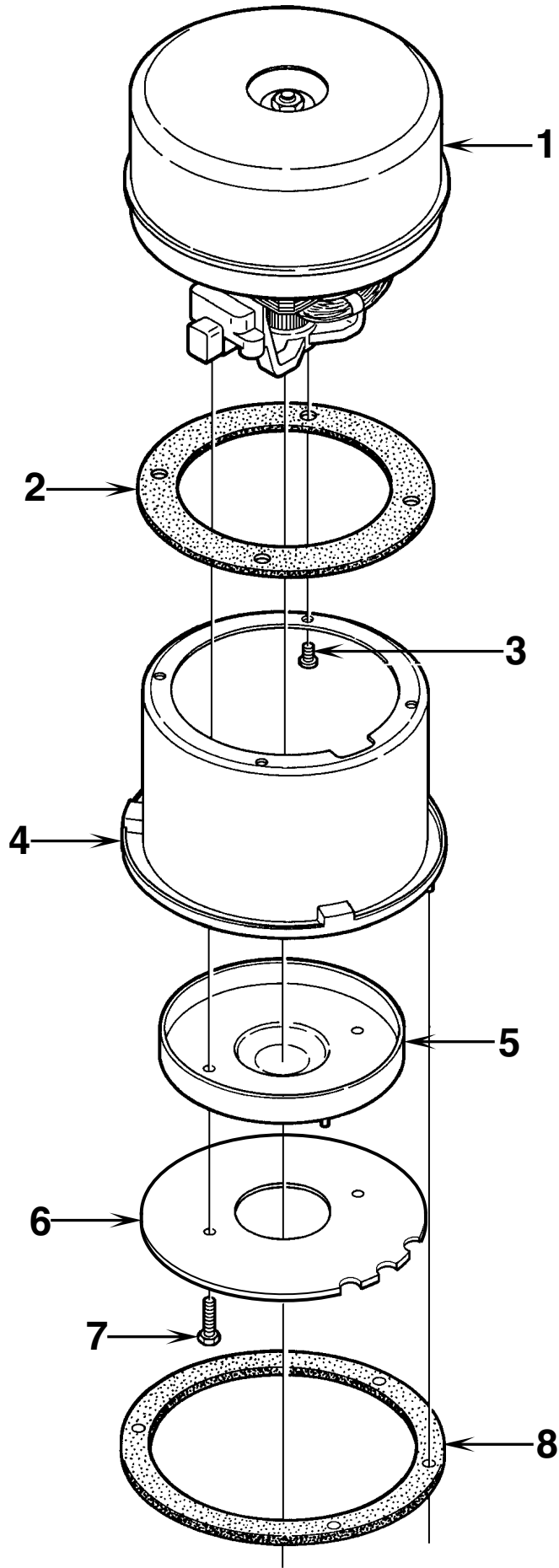
Model \_\_\_\_\_ Serial No. \_\_\_\_\_



## UPPER HOUSING

Item	Part No.	Qty	Description
	323174	1	Upper Housing Assembly (#1-21, 30-38)
1	706224	1	Plug
2	706220	1	Handle Grip
3		2	#10-24 x 1/4 Screw
4	323170	1	Indicator
5	323167	1	Vacuum Hose
6	015069	1	Decal, Full Bag
7	323153	1	Paper Filter Bag (pkg of 6)
*	323195	1	Cloth Bag
*	320676	1	Clip for Cloth Bag
*	323251	1	Bio-Bag™ (pkg of 6) (optional accessory, not included)
8	750746	1	Nipple
9		2	1/4-20 x 1-1/4 Screw
10	323143	1	Latch <b>TSB 561 - G7</b>
11	900484	3	Screw
12	323158	1	Internal Filter
13	323161	1	Internal Filter Housing
14	323152	1	Cover Assembly (#15-17) <b>TSB 562 - G6</b>
15	323151	1	Cover
16	014947	1	Decal, Carpetwin 16XP
17	323165	1	Gasket
18		3	#10-24 x 1/2 Screw
*		2	#10-24 Whiz Nut
19	323146	1	Stop
20	014945	1	Decal, Housing
21		4	5/16-18 Nut
22			SEE PAGE 3
23	323140	1	16" Yoke
24	323160	1	Exhaust Filter Retainer
25		3	#10-24 x 3/4 Screw
26	323275	1	Exhaust Filter
27	900287	2	Screw
28	323148	1	Wand Holder
29	323157	1	Yoke Gasket
30	323139	1	Housing <b>TSB 697, G-1</b>
31	323141	1	Wand
32	323142	1	Bag Fill Tube
33	100029	1	Handle Tube
34	323074	1	Cord Hook
35		2	1/4-20 Acorn Nut
36	706287	1	Clip
37	323171	1	Hose Bracket
38		3	#10-24 x 3/8 Screw
39	323179	2	Clip
40		4	5/16-18 Jam Nut
41		1	1/4-20 x 3/8 Screw
42		8	5/16 Washer
43	323013	4	Washer
44		4	5/16 Shakeproof Washer
45		4	5/16-18 x 1 Bolt
46		4	1/4 Washer

\* = Not Shown

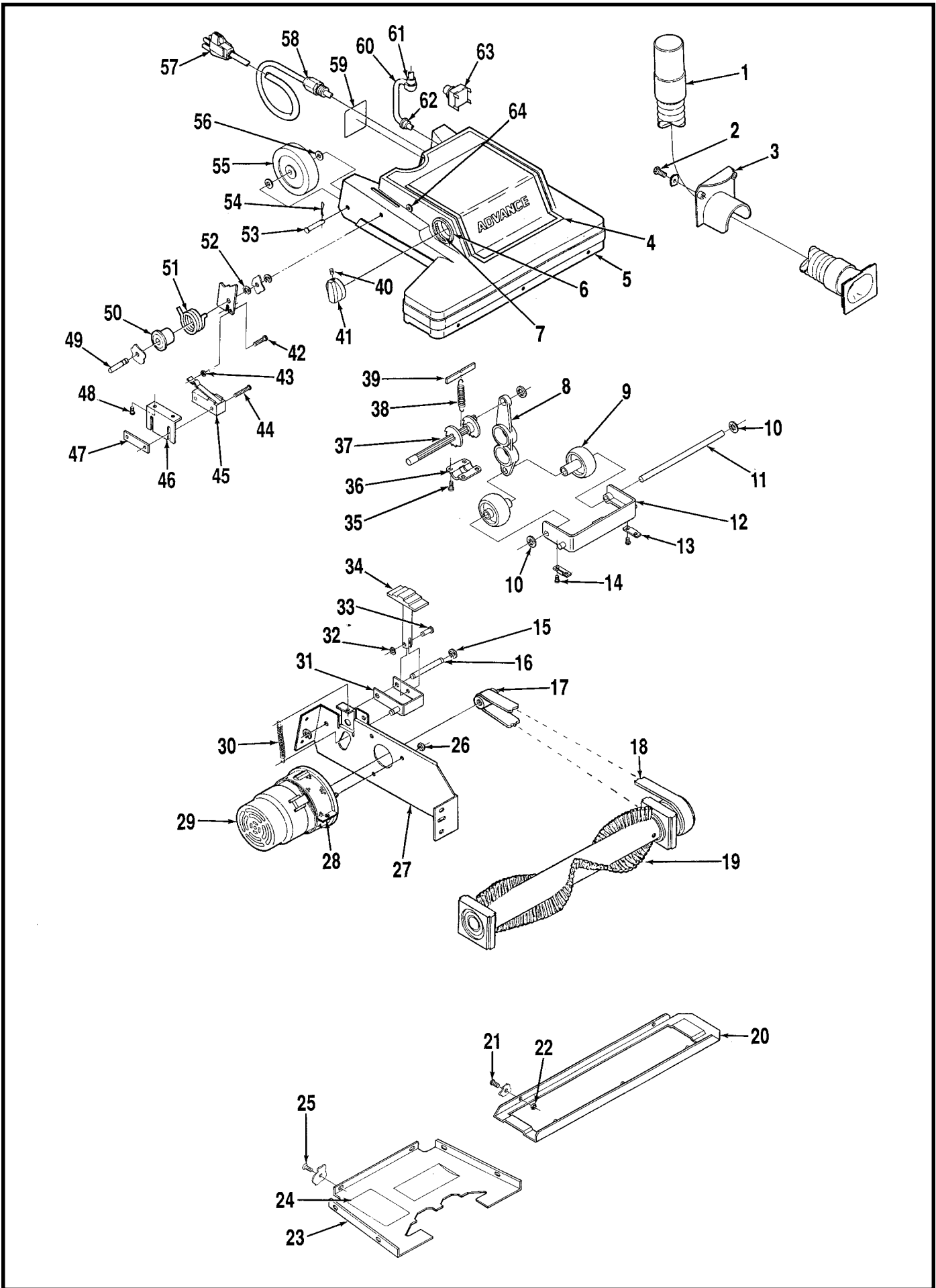


## VACUUM MOTOR ASSEMBLY

Item	Part No.	Qty	Description
1	323177	1	Vacuum Motor 100V, 120V
*	203518	1	Carbon Brush Set for 323177
	323242	1	Vacuum Motor 230V
*	503017	1	Carbon Brush Set for 323242
2	209325	1	Motor Gasket
3		4	#10-24 x 3/8 Screw
4	323173	1	Vacuum Motor Cup
5	323044	1	Inner Baffle
6	323009	1	Outer Baffle <b>SEE NOTE 1</b>
7		2	#10-24 x 7/8 Screw
8	323164	1	Cup Gasket
*	250150	1	Ground Wire
*	014119	1	Decal, Ground 230V

\* = Not Shown

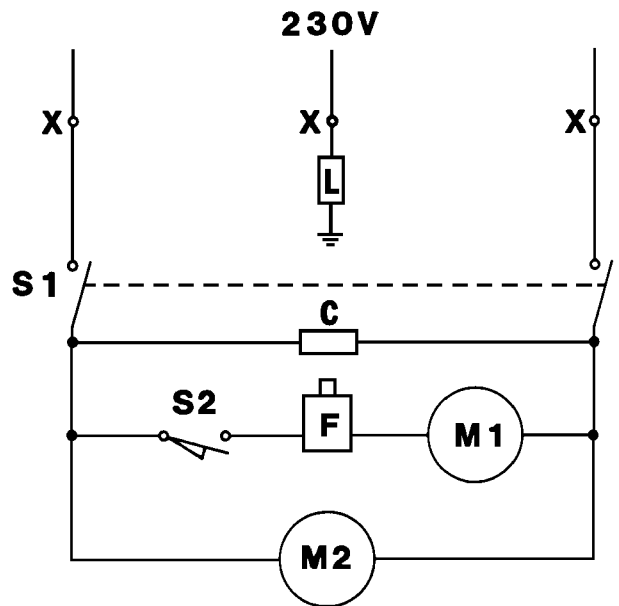
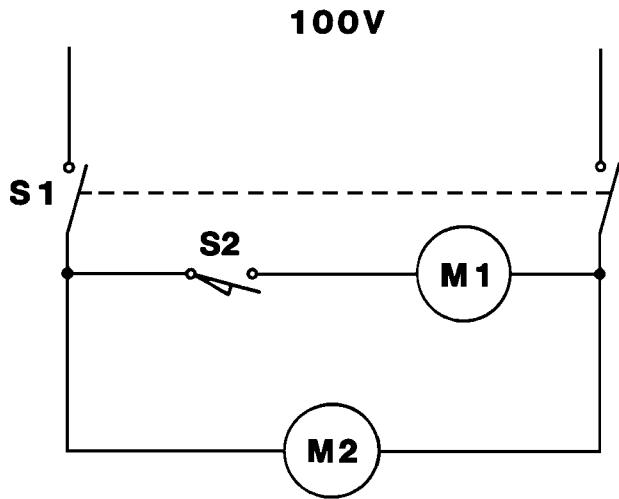
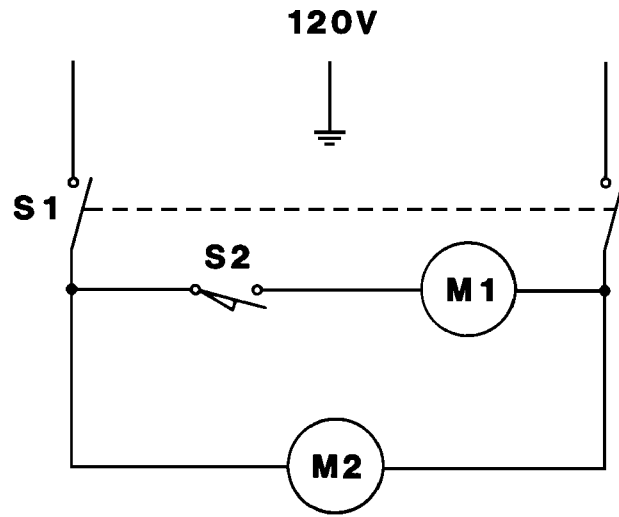
**NOTE 1:** Install the lip on outer baffel, item #6, turned away from the Vac motor.





# BASE ASSEMBLY

Item	Part No.	Qty	Description	Item	Part No.	Qty	Description
1	323168	1	Hose	41	324502	1	Knob
2	900238	2	Screw	42		3	#8-32 x 7/8 Screw
3	323176	1	Baffle	43		1	#8-32 Nut
4	015071	1	Decal, Advance	44		2	#6-32 x 7/8 Screw
5	323169	1	Housing Assy (#4-7)100V,120V	45	388019	1	Brush Motor Switch
	323241	1	Base Housing 230V				<b>TSB623, G-5</b>
6	325410	1	Knob Insert	46	321615	1	Bracket
7	021106	1	Decal, Knob	47	376015	1	Nut Plate
8	323038	1	Link	48		2	#8-32 x 3/8 Screw
9	323025	2	Wheel	49	323089	2	Pivot Pin
10	325227	3	Nut	50	323124	1	Bushing
11	325229	1	Pivot Pin	51	323123	1	Torsion Spring
12	323028	1	Yoke	52	321427	4	Retaining Ring
13	325213	2	Clamp	53	321404	2	Axle Pin
14		4	#10-24 x 1/2 Screw	54	321406	2	Cotter Pin
15	321125	2	Retaining Ring	55	327530	2	Wheel
16	323084	1	Pin	56	151041	4	Washer
17	323156	1	Motor Pulley	57	323225	1	Cord Set 100V
18	323021	1	Belt		323209	1	Cord Set 120V
19	323082	1	Brush Assembly		301309	1	Cord Set 230V
**	900137	1	Retaining Ring	58	323135	1	Strain Relief
**	320140	2	Bearing Block	*	171094	1	Lock Nut
**	323031	1	Brush Pulley	59	014820	1	Decal, Warning
**	372773	1	Bearing	60	323210	1	Cord 100V, 120V
20	325530	1	Shoe				<b>TSB 626, G-4</b>
21		5	#10-24 x 3/8 Screw		323238	1	Cord 230V
22		5	#10-24 Whiz Nut	61	185504	1	Strain Relief
23	323133	1	Base Cover	62	163015	1	Strain Relief <b>TSB 626, G-4</b>
24	015097	1	Decal, Wiring 100V	63	323741	1	Main Switch
	015301	1	Decal, Wiring 120V (Canadian only)	64	323055	2	Stop Bushing
	015047	1	Decal, Wiring 120V	*	290425	1	Circuit Breaker 1.5A (Canadian only)
	015147	1	Decal, Wiring 230V	*	290427	1	Circuit Breaker 230V
25	900267	5	Screw	*	183523	1	Terminal Block 230V
26		3	#8-32 Nut				
27	323183	1	Motor Bracket				* = Not Shown
28	323340	1	Screen				** = Included in Brush Assembly 323082
29	323093	1	Brush Motor 100V				
	323051	1	Brush Motor 120V <b>TSB 657, G-2</b>				
*	323097	1	Carbon Brush Set for 323093 and 323051				
*	323094	1	Brush Motor 230V				
*	503016	1	Carbon Brush Set for 323094				
30	321087	1	Spring				
31	328598	1	Latch				
32	321128	1	Retaining Ring				
33	321068	1	Pin				
34	323036	1	Pedal				
35		2	#6-32 x 3/8 Screw				
36	325225	1	Ratchet Retainer				
37	323027	1	Ratchet				
38	320484	1	Spring				
39	323035	1	Ratchet Catch				
40		1	#8-32 x 1/4 Set Screw				



## 120V WIRING DIAGRAM

Item	Part No.	Qty	Description
S1	323741	1	Main Switch
S2	388019	1	Brush Motor Switch <b>TSB 623, G-5</b>
M1	323051	1	Brush Motor
M2	323177	1	Vacuum Motor

## 100V WIRING DIAGRAM

Item	Part No.	Qty	Description
S1	323741	1	Main Switch
S2	388019	1	Brush Motor Switch <b>TSB 623, G-5</b>
M1	323051	1	Brush Motor
M2	323177	1	Vacuum Motor

## 230V WIRING DIAGRAM

Item	Part No.	Qty	Description
X	183523	1	Terminal Block
L	323592	1	Suppression Choke
C	323265	1	Capacitor
S1	323741	1	Main Switch
S2	388019	1	Brush Motor Switch <b>TSB 623, G-5</b>
F	290427	1	Circuit Breaker
M1	323094	1	Brush Motor