



Electronic Service Manuals

This electronic document is provided as a service to our customers. We do not create the contents of the information contained in this document. Should you have detailed questions pertaining to the information contained in this document, you may contact Michco, or the manufacturer which provided the original information in this electronic deliverable. Michco's only part in this electronic deliverable was the electronic assembly process.

You may contact Michco through the following methods:
Phone (517) 484-9312 or (800) 331-3339 MI, OH, IN only
2011 N. High St. -- Lansing, Michigan -- 48906
Fax: (517) 484-9836
Email: CustServ@Michco.com
Web site: www.Michco.Com
Parts Web site: www.FloorMachineParts.Com

Order Parts on Line at:
www.FloorMachineParts.Com

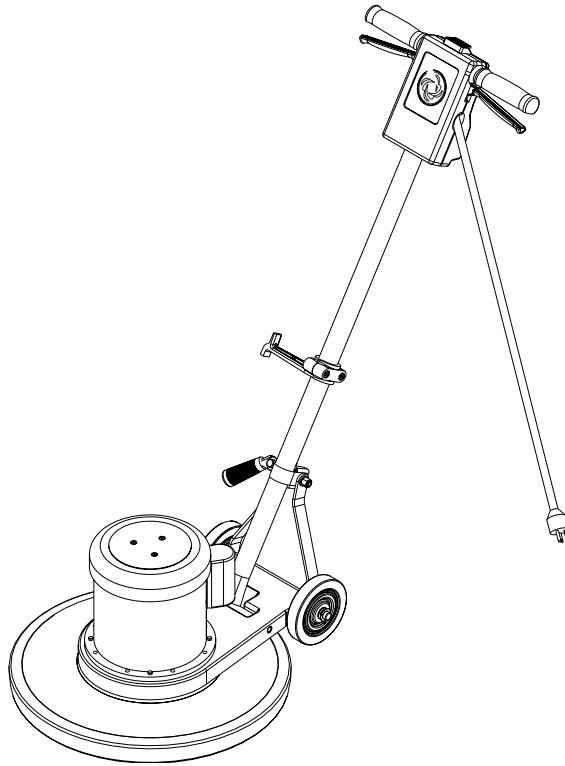
Directly to Parts & Service:
By Email: **Shop@Michco.com**
By Fax: (517) 702-2041
By Voice: Use numbers above.

Serving the Cleaning Industry Since 1922

Notice: All copyrighted material remains property of original owners, all trademarks are property of respective owners. Manuals are subject to Manufacturer's reproduction limitations. Originals or reproductions were provided by manufacturers through a request. We make no warranty as to the correctness of information provided in this document and you assume all risk.

SelectLine™ 13/17/20

SelectLine™ 17HD/20HD



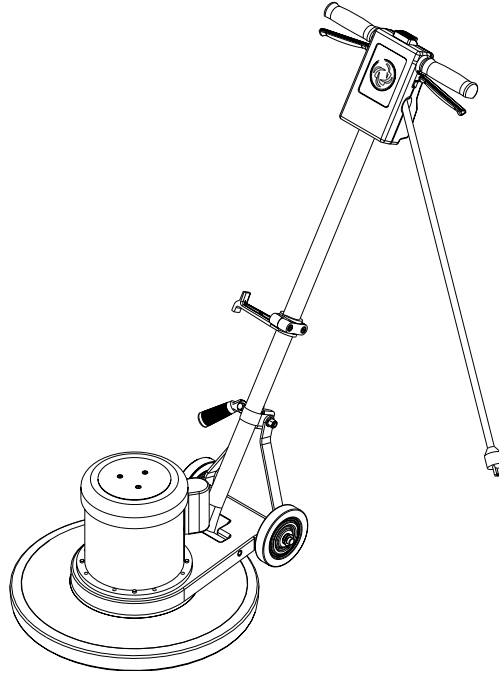
PARTS LIST

**Kent MODELS 56636943(13), 56636956(17), 56636969(20)
56201660(17HD), 56201661(20HD)**



KENT

6/99 revised 5/02 FORM NO. 56042376



DESCRIPTION	PAGE
HANDLE ASSEMBLY	2-3
WIRING DIAGRAM	3
BASE ASSEMBLY	4-5
SELECTLINE 13 MOTOR REPLACEMENT PARTS	6-7

WHEN ORDERING PARTS

- * Use the 8 digit numbers from the "Ref. No." columns in this parts list.
- * Specify the model and serial number of the machine.
- * Use the space below to record the model and serial number for future reference.

Model _____ Serial No. _____

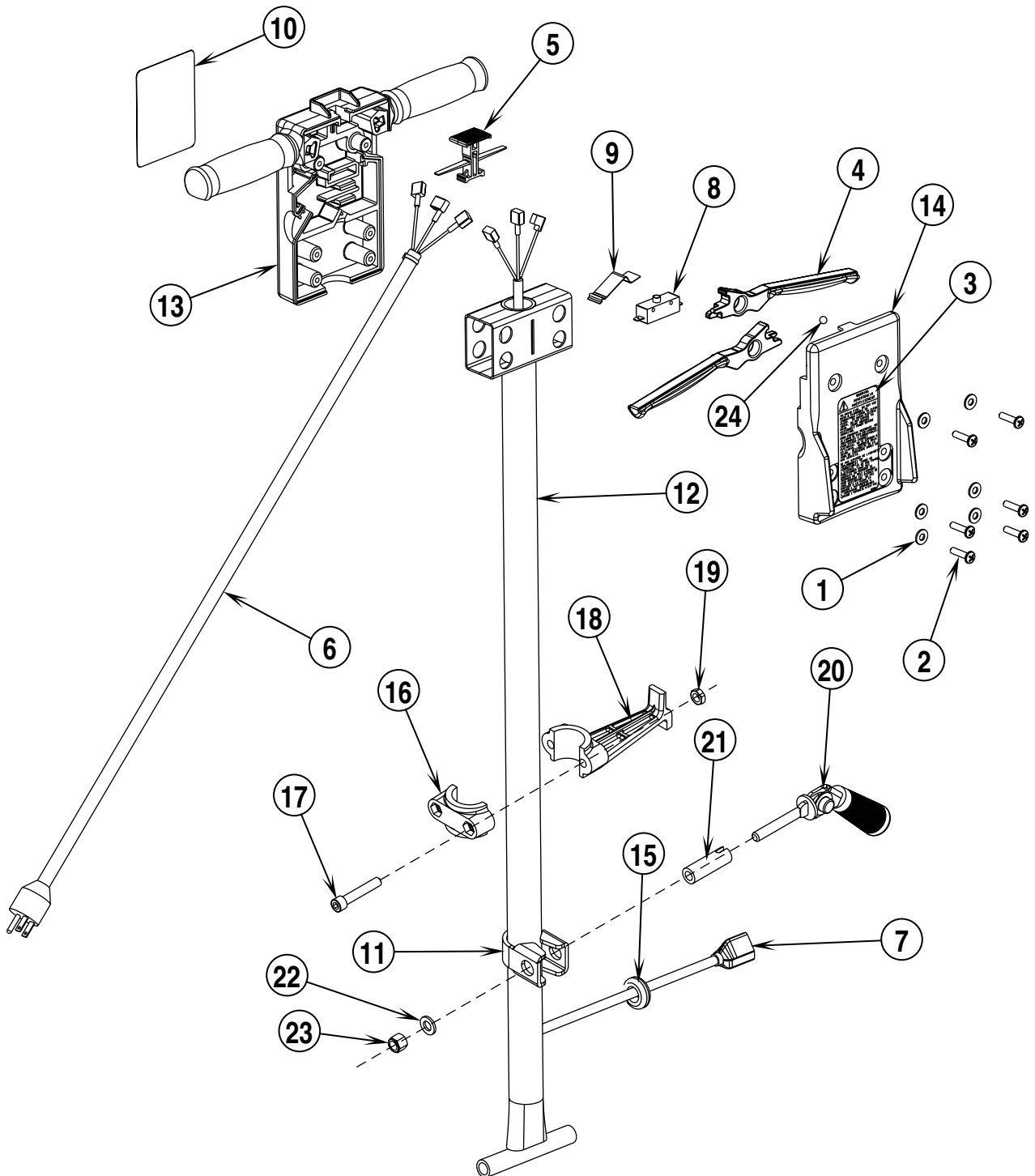
HANDLE ASSEMBLY

99-6

2

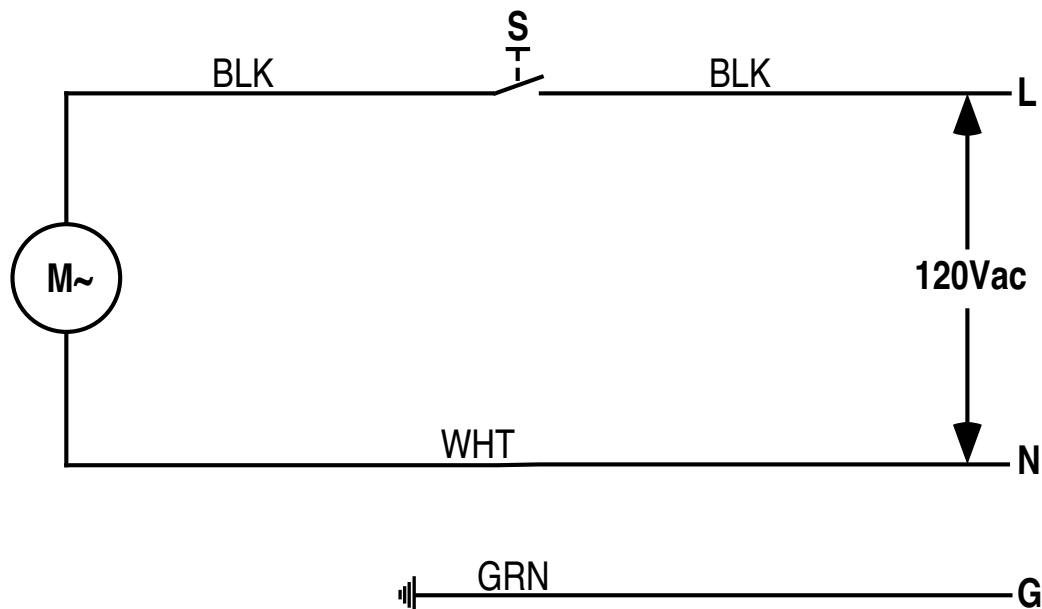
SelectLine™ 13 / 17 / 20 / 17HD / 20HD

00-3



Item	Ref. No.	Qty	Description
1	56002098	6	Wsh, Flt SAE 1/4
2	56002292	6	Scr, Pan Phil 1/4-20 x 1.00
3	56014828	1	Decal, Warning
4	56201027	2	Handle Lever
5	56201031	1	Button, Lock
6	56201032	1	Cord Set, 14/3 x 50'
7	56201033	1	Cord Assembly 14/3 (17/20, 17HD/20HD)
8	56201034	1	Switch, N.O. SPST Snap
9	56263648	1	Spring, Plate
10	56016350	1	Decal, Logo
11	56046595	1	Clamp, Handle - Lock
12	56201655	1	Handle Weldment
13	56201656	1	Handle, Front
14	56201657	1	Handle, Back
15	56055868	1	Grommet
16	56048572	1	Cord Hook, Cap
17	56003508	2	Scr, Soc Hd Loc 5/16-18 x 1.75
18	56048571	1	Cord Hook, Body
19	56009086	2	Nut, Hex Jam 5/16-18
20	56032656	1	Cam Lock
21	56046606	1	Spacer Guide
22	56009214	1	Wsh, Flt .406 x .750 x .090
23	56002769	1	Nut, Hex Nyl Loc 3/8-16
*	56201769	1	Cord Assy, 14/3 (13)
24	56201592	1	Ball, 1/4 SS

* = Not Shown



Item	Ref. No.	Qty	Description
S	56201034	1	Switch, N.O. SPST Snap
M	56026115	1	Motor .50HP (13)
	56201040	1	Motor / Gearbox, 1.25HP, 10:1 (17 / 20)
	56201627	1	Motor / Gearbox, 1.50HP, 10:1 (17HD / 20HD)

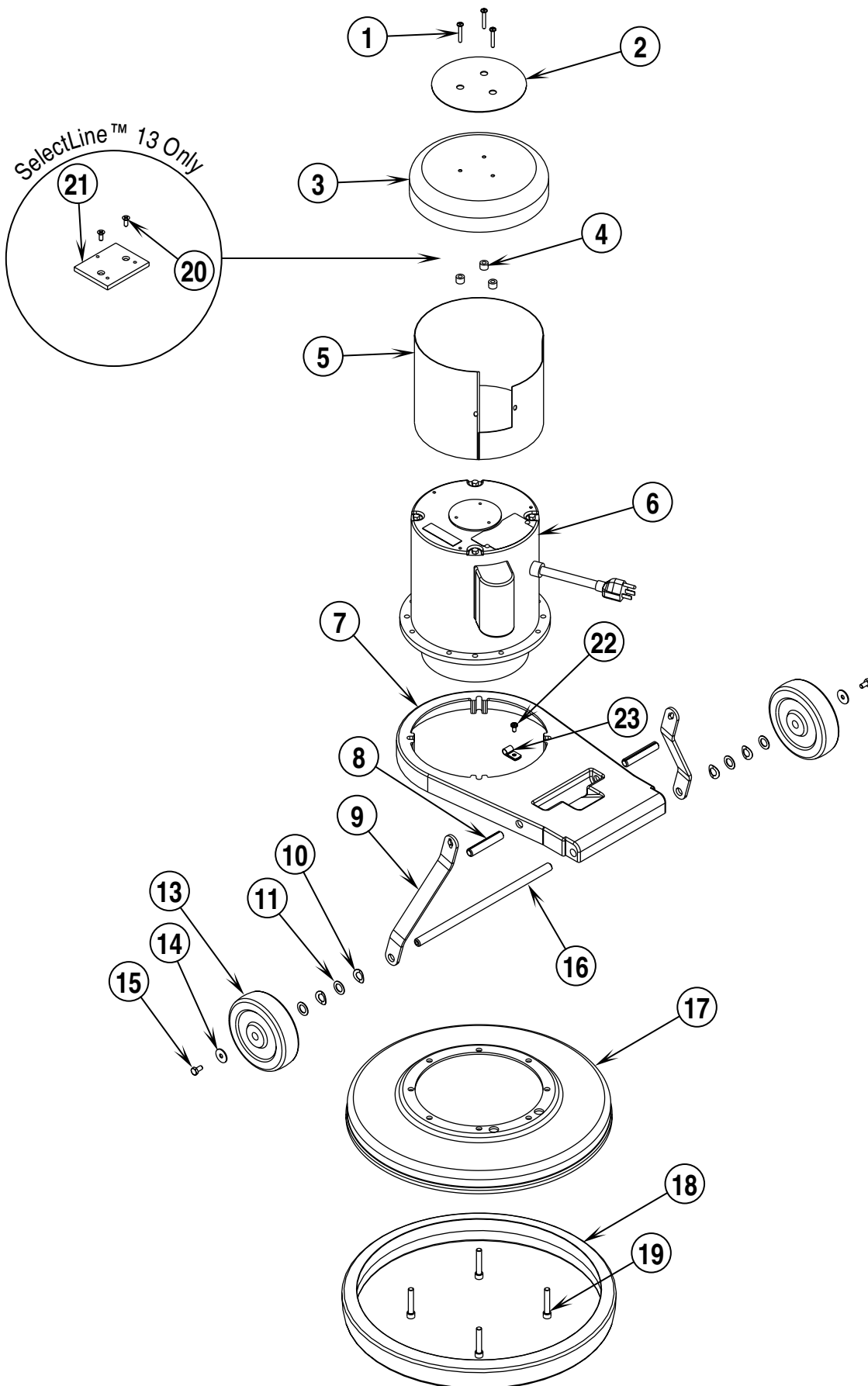
BASE ASSEMBLY

99-6

4

SelectLine™ 13 / 17 / 20 / 17HD / 20HD

00-12



99-6	BASE ASSEMBLY			
02-5	SelectLine™ 13 / 17 / 20 / 17HD / 20HD			5

Item	Ref. No.	Qty	Description	Item	Ref. No.	Qty	Description
1	56009090	3	Scr, Pan Phil Loc 1/4-20 x 1.25	17	56096748	1	Brush Cover, 13"
2	56016513	1	Decal, SelectLine 13		56201664	1	Brush Cover, 17"
	56016654	1	Decal, SelectLine 17		56201665	1	Brush Cover, 20"
	56016655	1	Decal, SelectLine 20	18	56057224	1	Bumper, 13"
	56016661	1	Decal, SelectLine 17HD		56053729	1	Bumper, 17"
	56016662	1	Decal, SelectLine 20HD		56053331	1	Bumper, 20"
3	56646052	1	Motor Drip Cover (13)	19	56003508	4	Scr, Soc Hd Loc 5/16-18 x 1.75
	56201662	1	Motor Drip Cover (All 17 / 20 models)	20	56002569	2	Scr, Flt Phil Thd Form 10-24 x .50 (13)
4	56050872	3	Spacer, Phenolic (All 17 / 20 models)	21	56050294	1	Mounting Plate (13)
5	56057737	1	Screen, Perf. (13)	22	56009030	1	Scr, Pan Phil Thd Form 10-24 x .38 (13)
	56201650	1	Screen, Perf. (17 / 20)	23	56300152	1	Clamp, P (13)
	56201652	1	Screen, Perf. (17HD / 20HD)				
6	56026115	1	Motor .50HP (13)				Pad Holders / Pads / Brushes
	56035411	1	Gear Unit		562020371	1	Pad Holder 13 (standard)
	56201040	1	Motor / Gearbox, 1.25HP, 10:1 (17 / 20)	**	56020309	1	Grit Brush 13
*	56201037	1	Bearing, Front	**	56020223	1	Poly Brush 13
*	56201038	1	Switch, Stationary	**	56020200	1	Steel Brush 13
*	56201039	1	Switch, Rotor	**	56020196	1	Polish Brush 13
*	56201042	1	Capacitor, Start	**	56020194	1	Fiber Brush 13
*	56201043	1	Gear Head Assembly	**	56637073	1	White Super Polish Pad 13
*	56201044	1	Pinion, 13 Teeth	**	56015660	1	Green Scrub Pad 13
*	56201045	1	Coupling	**	56635154	1	Red Buff Pad 13
	56201627	1	Motor / Gearbox, 1.50HP, 10:1 (17HD / 20HD)	**	56637071	1	Black Stripping Pad 13
*	56168167	1	Planetary Gear System		56505910	1	Padholder Assembly 17 (standard)
*	56201037	1	Bearing, Front	**	56505270	1	Level-Set Pad Holder 17
*	56201039	1	Switch, Rotor	**	56505915	1	ProLite™ Brush 17
*	56201043	1	Gear Head Assembly	**	56505914	1	Prolene Brush 17
*	56201044	1	Pinion, 13 Teeth	**	56505911	1	MagnaGrit™ 46 Brush 17
*	56201045	1	Coupling	**	56505912	1	DynaGrit™ 80 Brush 17
*	56201623	1	Switch, Stationary	**	56505918	1	MidLite Grit™ 180 Brush 17
*	56201954	1	Capacitor, Start	**	56505917	1	MidGrit™ 240 Brush 17
*	56201953	1	Capacitor, Run	**	56505913	1	AgLite™ 500 Brush 17
				**	56505916	1	Union Mix Brush 17
				**	56505539	1	Soft-Touch™ Shampoo Brush 17
7	56201663	1	Frame, Floor Machine		56505920	1	Padholder Assembly 20 (standard)
8	56003509	2	Pin, Spr., .50 x 2.75	**	56505280	1	Level-Set Pad Holder 20
9	56640341	2	Connecting Leg	**	56505925	1	ProLite™ Brush 20
10	56009001	4	Washer, Bowed .516 x .906 x .008 NOTE #2	**	56505924	1	Prolene Brush 20
11	56009266	4	Wsh, Flt .531 x .875 x .036	**	56505921	1	MagnaGrit™ 46 Brush 20
12			Intentionally Omitted	**	56505922	1	DynaGrit™ 80 Brush 20
13	56201018	2	Wheel, 5.00 x 1.50 NOTE #2	**	56505928	1	MidLite Grit™ 180 Brush 20
14	56009002	2	Wsh, Flt .266 x .906 x .060 NOTE #2	**	56505927	1	MidGrit™ 240 Brush 20
15	56003039	2	Scr, Hex Hd Loc 1/4-20 x .50 NOTE #2	**	56505923	1	AgLite™ 500 Brush 20
16	56201089	1	Axle NOTE #2	**	56505926	1	Union Mix Brush 20
				**	56505540	1	Soft-Touch™ Shampoo Brush 20
				**	56506006	A/R	Clutch Plate for Above Brushes
				**	56393567	A/R	"Big Mouth" Pad Retainer

* = Not Shown

** = Optional

NOTE #1: Pad Holders and Brushes come complete with Industry Standard NP-92 Clutch Plate.

NOTE #2: The axle and wheels have been changed to standardize parts. If you are replacing an old style Wheel **PN 56048058** or Axle **PN 56048067** you will need to order items (**10 & 13-16**), item 11 is re-used with the new assembly.

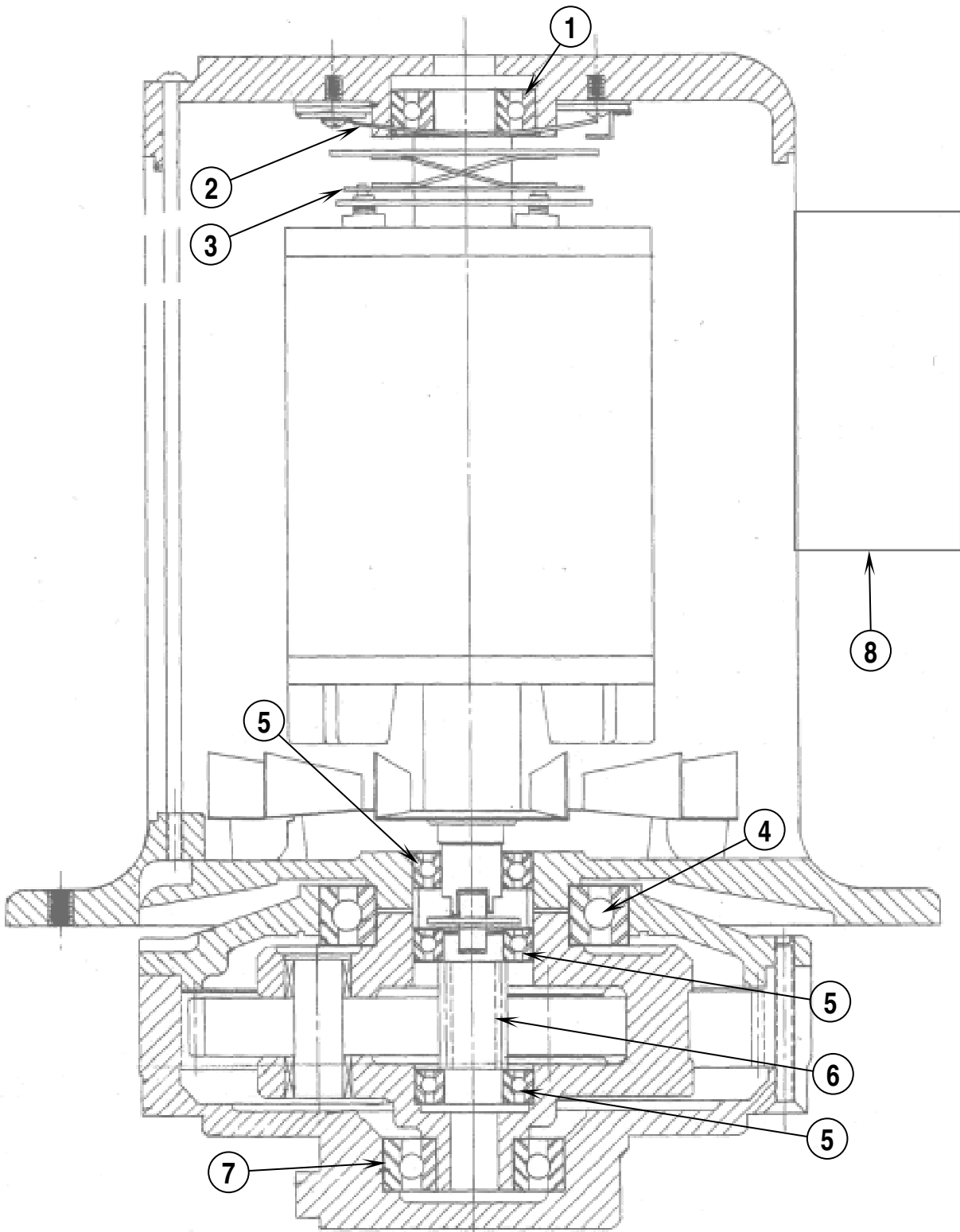
SELECTLINE 13 MOTOR REPLACEMENT PARTS

99-6

6

SelectLine™ 13 / 17 / 20 / 17HD / 20HD

02-5



99-6

SELECTLINE 13 MOTOR REPLACEMENT PARTS

02-5

SelectLine™ 13 / 17 / 20 / 17HD / 20HD**7**

Item	Ref. No.	Qty	Description
1	56027177	1	Bearing, Commutator End
2	56026933	1	Switch, Stationary
3	56026932	1	Switch, Centrifugal
4	56027210	1	Bearing, Ball
5	56027213	3	Bearing, Ball
6	56038696	1	Pinion, 10:1 Ratio
7	56027212	1	Bearing, Ball
8	56028812	1	Capacitor, 375 MFD

 **KENT/
Euroclean**
Working For A Cleaner World
Kent/Euroclean
14600 21st Avenue North
Plymouth, MN, 55447-3408
www.eurocleanusa.com
Phone: 800-334-1083
Fax: 866-261-4779