



Electronic Service Manuals

This electronic document is provided as a service to our customers. We do not create the contents of the information contained in this document. Should you have detailed questions pertaining to the information contained in this document, you may contact Michco, or the manufacturer which provided the original information in this electronic deliverable. Michco's only part in this electronic deliverable was the electronic assembly process. By providing this manual on line we are not guaranteeing parts availability.

You may contact Michco through the following methods:

Phone (517) 484-9312 or (800) 331-3339

2011 N. High St. -- Lansing, Michigan -- 48906

Fax: (517) 484-9836

Email: CustServe@Michco.com

Web site: www.Michco.Com

Parts Web site: www.FloorMachineParts.Com

Order Parts on Line at:

www.FloorMachineParts.Com

Directly to Parts & Service:

By Email: **Shop@Michco.com**

By Fax: (517) 702-2041

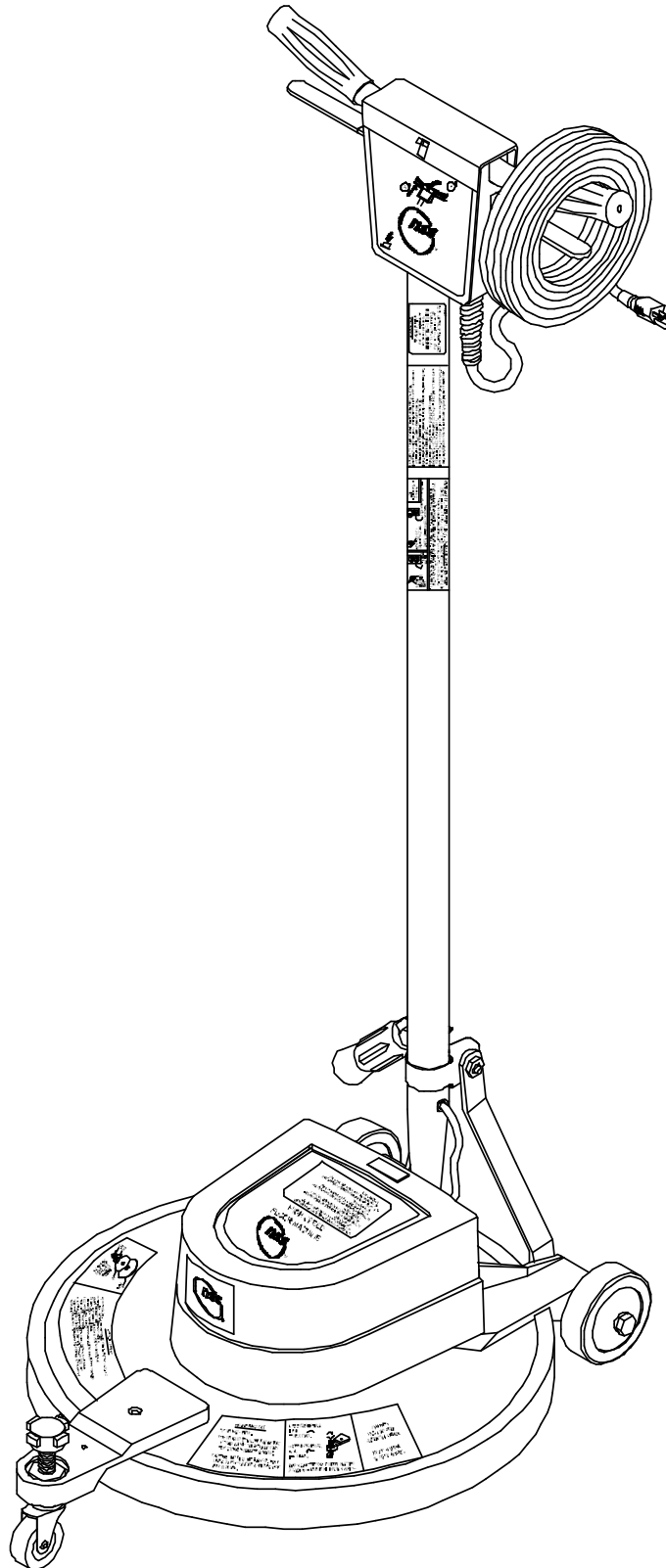
By Voice: Use numbers above.

Serving the Cleaning Industry Since 1922

Notice: All copyrighted material remains property of original owners, all trademarks are property of respective owners. Manuals are subject to Manufacturer's reproduction limitations. Originals or reproductions were provided by manufacturers through a request. We make no warranty as to the correctness of information provided in this document and you assume all risk. By placing these manuals on line we are not declaring our corporation to be an manufacturer authorized dealer or provider, please check our web site for authorized manufacturers we represent.

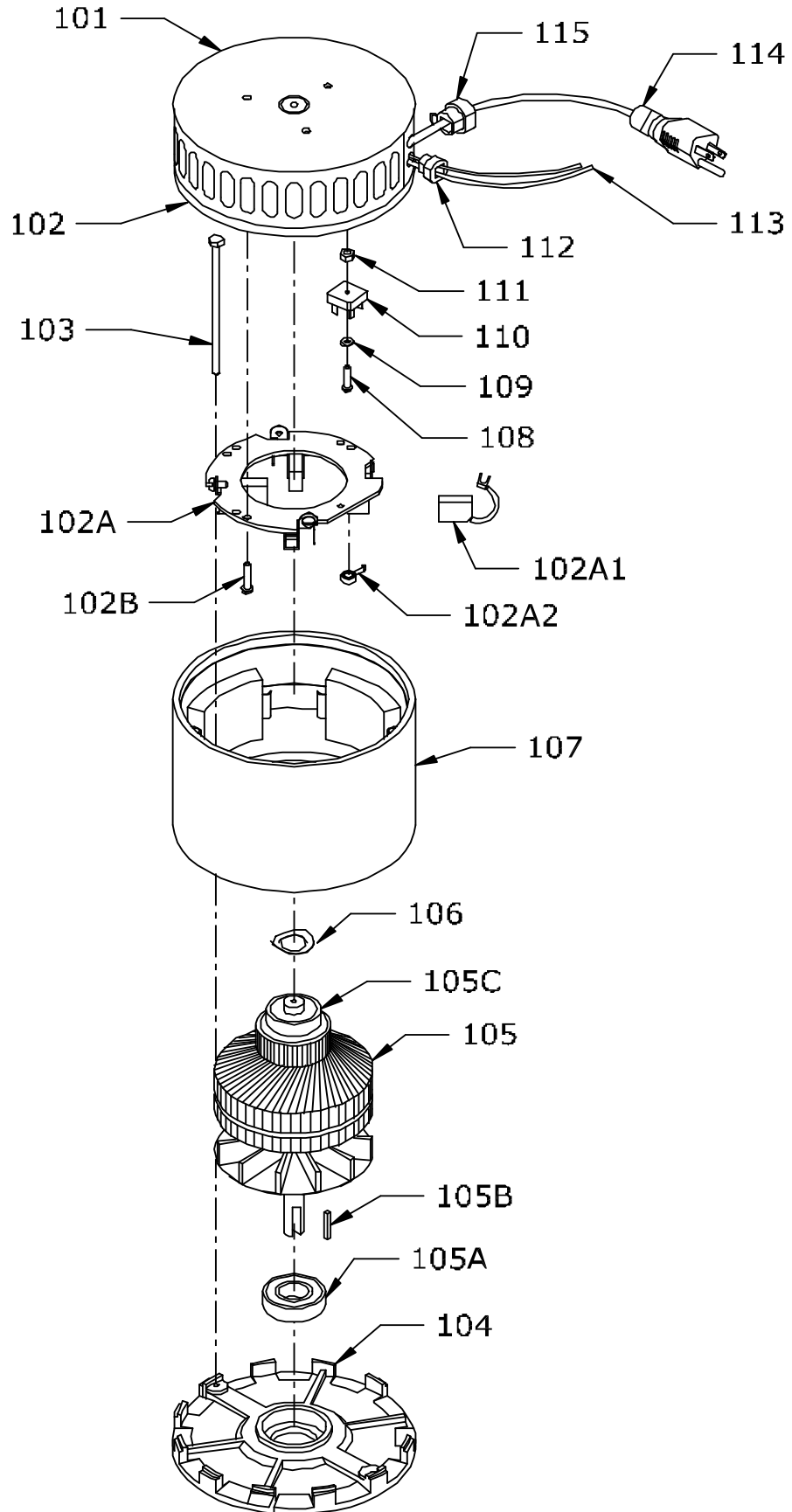
PARTS LIST

ELECTRIC CHARGER 2500



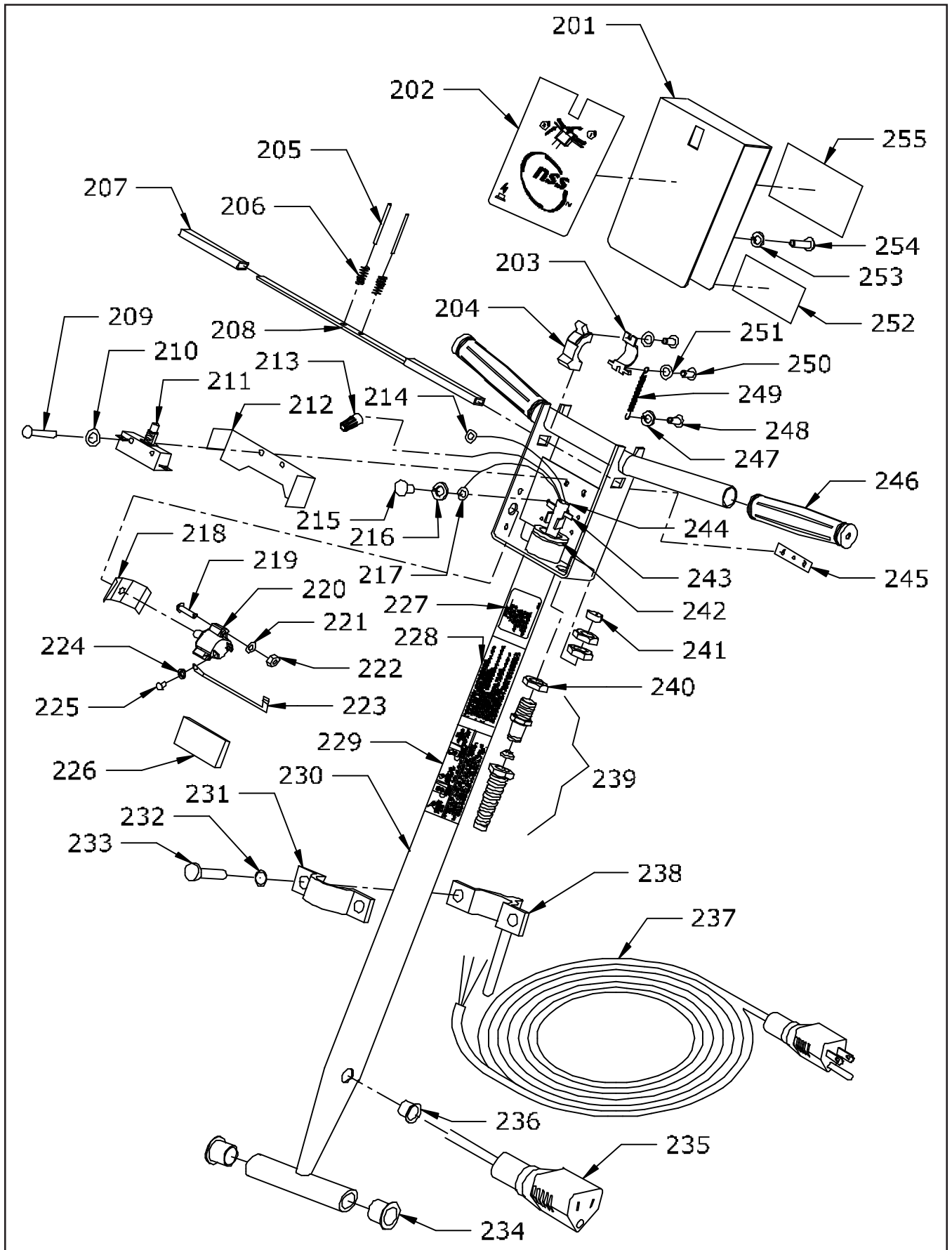
<u>ITEM</u>	<u>PART NO.</u>	<u>PART DESCRIPTION</u>	<u>QTY.</u>
	5298351	MOTOR 115 VOLT 2500	1
101	5991731	COMMUTATOR BRACKET COVER	1
102	5298441	COMMUTATOR BRACKET ASSEMBLY WITH BRUSH, BOARD, LEADS - INCLUDES:	1
	5298451	COMMUTATOR BRACKET MACHINED	1
102A	5295071	BRUSH BOARD ASSEMBLY WITH DETECTORS, AND LEADS, INCLUDES:	1
102A1	5293651	CARBON BRUSH	4
102A2	2797571	BRUSH SPRING	4
102B	9120600	10-24 X 1/2 SELF TAPPING SCREW	5
103	5991701	THRU BOLT	2
104	5298501	BRACKET - BOTTOM END	1
105	5298431	ARMATURE ASSEMBLY WITH BEARINGS - INCLUDES:	1
105A	5991541	BEARING - BOTTOM END	1
105B	9120827	3/16 SQUARE X 1 LONG KEY	1
105C	5991551	BEARING - TOP END	1
106	5991741	HELICAL WASHER	1
107	5991521	STATOR FRAME ASSEMBLY - WITH CLIPS AND MAGNETS	1
108	5991661	8-32 X 1.125 MOUNTING SCREW	2
109	5991671	M8 FLAT WASHER - BRASS	2
110	5492741	RECTIFIER	2
111	5991681	HEX NUT WITH STAR LOCK WASHER	2
112	5298461	STRAIN RELIEF	1
113	5298491	LEAD ASSEMBLY AMP METER	2
114	5298481	LEAD ASSEMBLY MOTOR CORD	1
115	5991591	STRAIN RELIEF	1

MOTOR ASSEMBLY



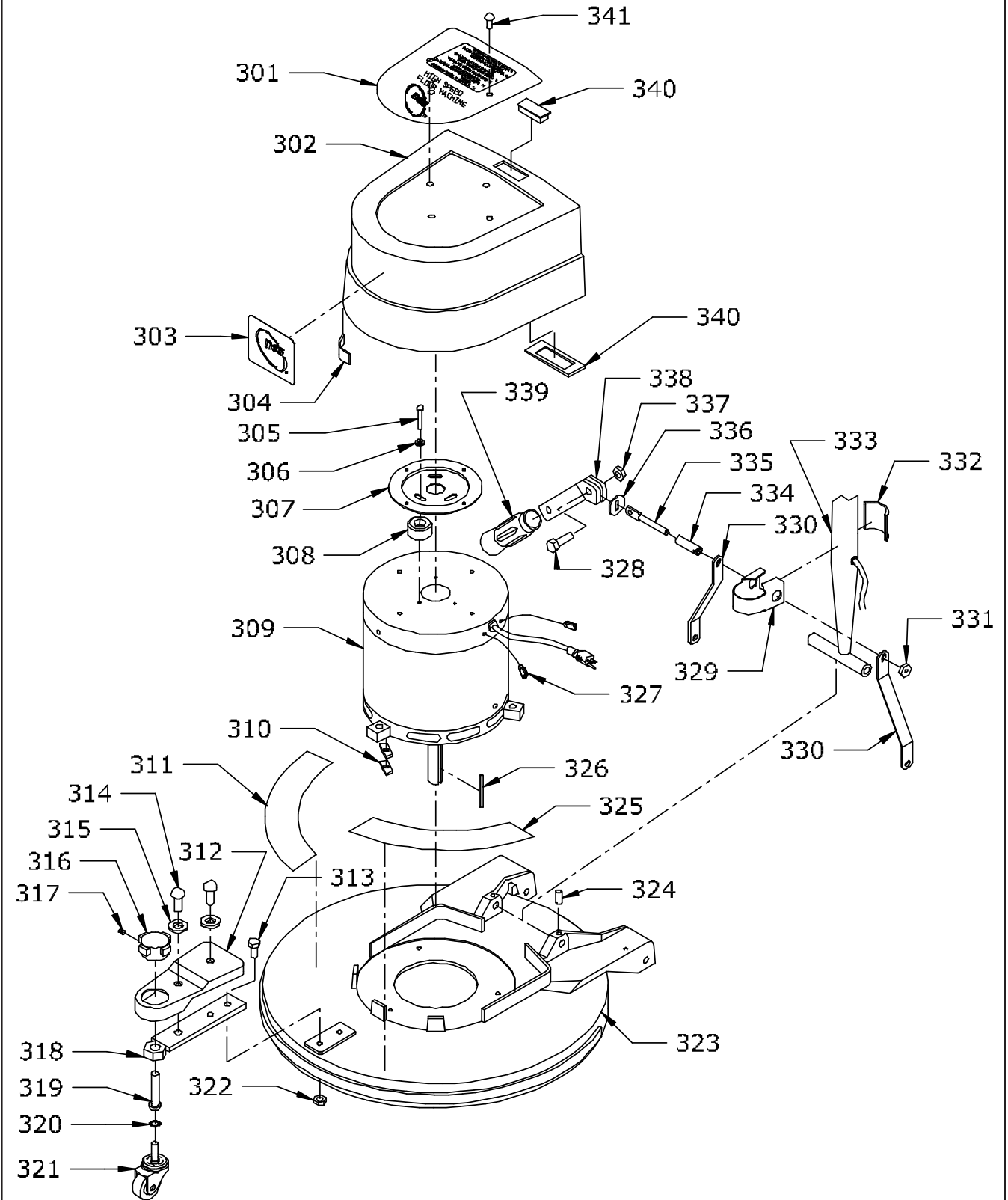
<u>ITEM</u>	<u>PART NO.</u>	<u>PART DESCRIPTION</u>	<u>QTY.</u>
	5297649	HANDLE ASSEMBLY - 2500 - 115 VOLT	1
201	5391873	SWITCH BOX COVER	1
202	5392421	SWITCH BOX WITH CIRCUIT BREAKER ICON	1
203	0393511	SAFETY LOCKOUT BRACKET	1
204	0393521	SAFETY LOCKOUT	1
205	9120828	1/8 X 1 3/4 ROLL PIN (PACK OF 4)	2
206	5390171	SWITCH LEVER SPRING	2
207	0393411	GRIP - SWITCH LEVER	2
208	0393401	SWITCH LEVER	1
209	9120100	6-32 X 1 ROUND HEAD PHILLIPS MACHINE SCREW (PACK OF 10)	2
210	9120130	6 EXTERNAL STAR LOCK WASHER (PACK OF 10)	2
211	5390211	SWITCH	1
212	5390361	SWITCH INSULATOR	1
213	5391321	WIRE NUT, ORANGE-#30-073 IDEAL	1
214	0294031	# 8 RING TERMINAL 16-14 GAGE	1
215	9120380	10-24 X 3/8 ROUND HEAD PHILLIPS MACHINE SCREW (PACK OF 10)	1
216	9120320	10 SPLIT LOCK WASHER (PACK OF 10)	1
217	0298981	# 10 RING TERMINAL 16-14 GAGE	1
218	5490441	BREAKER LEAD - INSULATION	1
219	9120430	10-24 X 3/4 ROUND HEAD PHILLIPS MACHINE SCREW (PACK OF 10)	2
220	5294381	17 1/2 AMP CIRCUIT BREAKER	1
221	9120320	10 SPLIT LOCK WASHER (PACK OF 10)	2
222	9120360	10-24 HEX NUT WITH STAR LOCK WASHER (PACK OF 10)	2
223	5490451	CIRCUIT BREAKER LEAD - 4" WITH TERMINALS	1
224	9120200	8 SPLIT LOCK WASHER (PACK OF 10)	1
225	9120223	8-32 X 1/4 PAN HEAD PHILLIPS MACHINE SCREW (PACK OF 5)	1
226	5390511	FOAM PAD	1
227	5392401	WARNING - FIRE LABEL	1
228	0190901	WARNING LABEL	1
229	0190911	GROUNDING LABEL	1
230	5391891	HANDLE, MAVERICK, CE	1
231	5091636	CORD HOOK CLAMP	1
232	9120880	1/4 SPLIT LOCK WASHER (PACK OF 10)	2
233	9121010	1/4-20 X 3/4 TRUSS HEAD PHILLIPS MACHINE SCREW (PACK OF 5)	2
234	5090441	NYLON BUSHING	2
235	5490861	HANDLE CORD	1
236	5293131	GROMMET	1
237	5293791	CORD - 75 FEET - 14-3 ST	1
	5091569	CORD - 50 FEET WITH TERMINALS - OPTIONAL	1
238	5091682	CORD HOOK	1
239	5091671	STRAIN RELIEF METAL	1
240	5390261	STRAIN RELIEF NUT	3
241	5092371	CORD CLAMP, #1002-545 EVERLOCK	1
242	5091656	7/8 I.D. X 1 3/8 O.D. X .112 THICK FLAT WASHER	1
243	5095501	CORD CLAMP	1
244	8791070	3/8 I.D. X 1/2 O.D. VINYL HOSE	"4
245	9120025	6-32 DOUBLE HOLE SWITCH SPEED NUT	1
246	0393441	HANDLE GRIP, BLACK	2
247	9120320	10 SPLIT LOCK WASHER (PACK OF 10)	1
248	9120380	10-24 X 3/8 ROUND HEAD PHILLIPS MACHINE SCREW (PACK OF 10)	1
249	0393381	SPRING	1
250	0393881	M3 X .05 X 8mm PAN HEAD PHILLIPS THREAD CUTTING SCREW	2
251	0393841	M3 EXTERNAL STAR LOCK WASHER	2
252	5296471	IDENTIFIER DECAL	1
253	9120320	10 SPLIT LOCK WASHER (PACK OF 10)	2
254	9120430	10-24 X 3/4 ROUND HEAD PHILLIPS MACHINE SCREW (PACK OF 10)	2
255	5392461	OPERATION LABEL	1

HANDLE ASSEMBLY



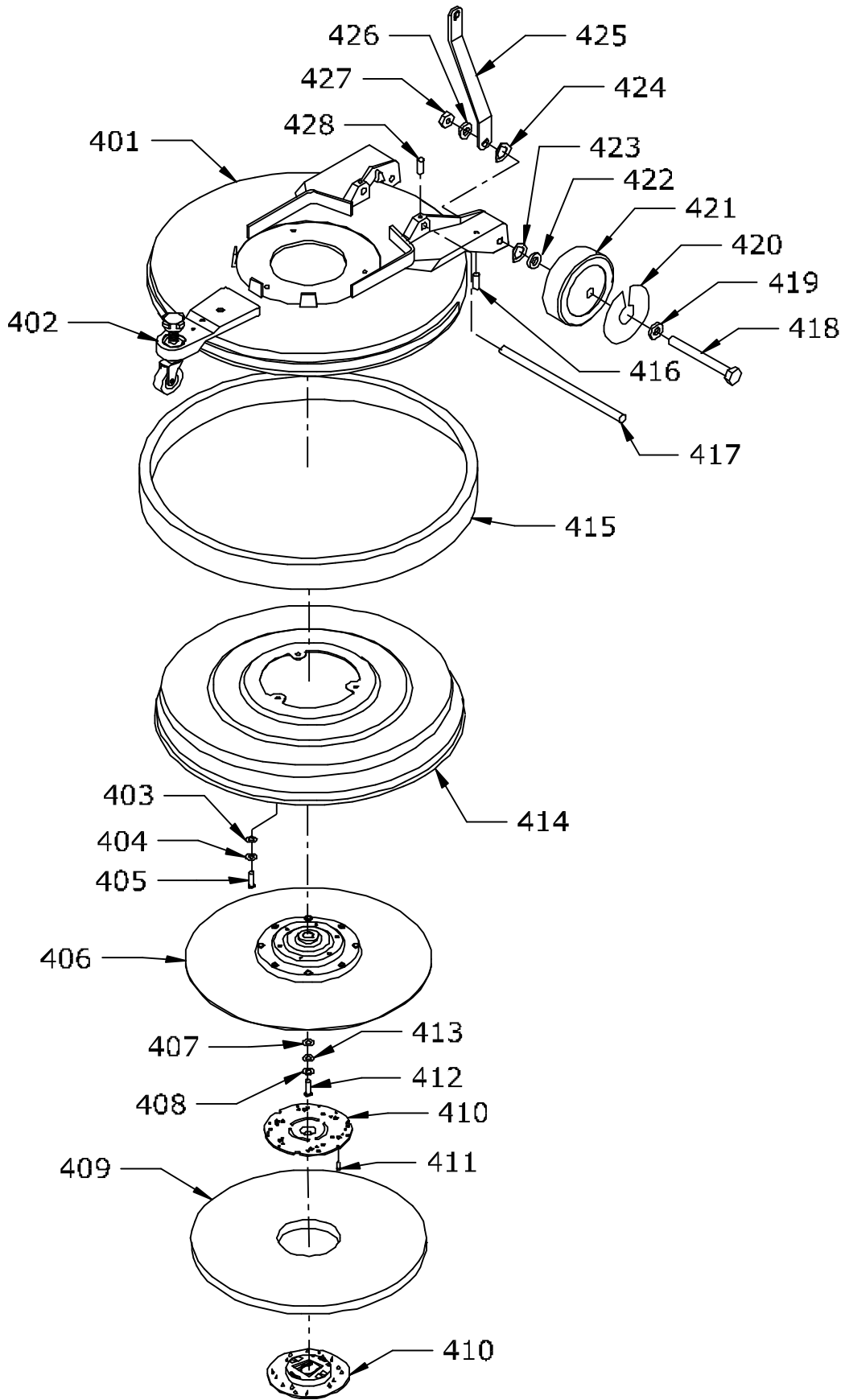
ITEM	PART NO.	PART DESCRIPTION	QTY.
302	5297569	MOTOR COVER ASSEMBLY - INCLUDES:	1
	5297561	MOTOR COVER	1
301	5296401	ELECTRIC CHARGER 2500 DECAL KIT	1
304	8891130	GASKET 1 X 1/8 - NEOPRENE	1
303	0393531	NSS LOGO DECAL	1
305	9120780	10-32 X 1 1/4 ROUND HEAD SLOT MACHINE SCREW (PACK OF 5)	3
306	9120370	7/32 I.D. X 1/2 O.D. X .032/.065 THICK FLAT WASHER #10 (PACK OF 10)	3
307	5294706	COVER STAND OFF	1
308	4894461	RUBBER STOP	3
309	5298351	MOTOR - 115 VOLT	1
310	5091691	RUBBER PAD - 1 IN FRONT - 2 ON EACH SIDE IN THE BACK	5
311	5296401	ELECTRIC CHARGER 2500 DECAL KIT	1
312	5296619	CASTER TRIM ASSEMBLY - INCLUDES:	1
	5296081	CASTER TRIM	1
313	9121680	5/16-18 X 1 HEX BOLT (PACK OF 5)	2
314	9120380	10-24 X 3/8 ROUND HEAD PHILLIPS MACHINE SCREW (PACK OF 10)	2
315	9120495	10 INTERNAL STAR LOCK WASHER (PACK OF 10)	2
316	5296542	KNOB	1
317	9120850	1/4-20 X 5/16 SET SCREW KNURL POINT (PACK OF 2)	1
318	5296573	CASTER BRACKET	1
319	5297826	CASTER STEM	1
320	9121967	7/16 EXTERNAL STAR LOCK WASHER (PACK OF 5)	1
321	5296031	CASTER	1
322	9121430	5/16-18 HEX NUT WITH NY-LOK INSERT - THIN (PACK OF 5)	2
323	5297513	BASE - SKIRT	1
324	9120850	1/4-20 X 5/16 SET SCREW - KNURL POINT (PACK OF 2)	1
325	5296401	ELECTRIC CHARGER 2500 DECAL KIT	1
326	9120827	3/16 SQUARE X 1 LONG KEY - STEEL (PACK OF 2)	1
327	3290671	PUSH ON TERMINAL - #BB-8141	2
328	9121680	5/16-18 X 1 HEX BOLT (PACK OF 5)	1
329	5390043	HANDLE TUBE CLAMP	1
330	5390026	HANDLE BRACE	2
331	9122140	3/8-16 HEX NUT WITH NY-LOK INSERT (PACK OF 5)	2
332	5390826	TUBE CLAMP SHOE	1
333	5391891	HANDLE, MAVERICK CE	1
334	5390201	RUBBER TUBING	1
335	0393141	FLATTENED CLAMP BOLT	1
336	0393131	SLOTTED WASHER	1
337	9121420	5/16-18 HEX NUT (PACK OF 10)	1
338	0393121	CLAMP LEVER	1
339	0393321	HANDLE GRIP	1
340	5297841	AMP METER WITH HARDWARE	1
341	9120210	8-32 X 1/4 TRUSS HEAD MACHINE SCREW (PACK OF 10)	4

BASE ASSEMBLY - UPPER



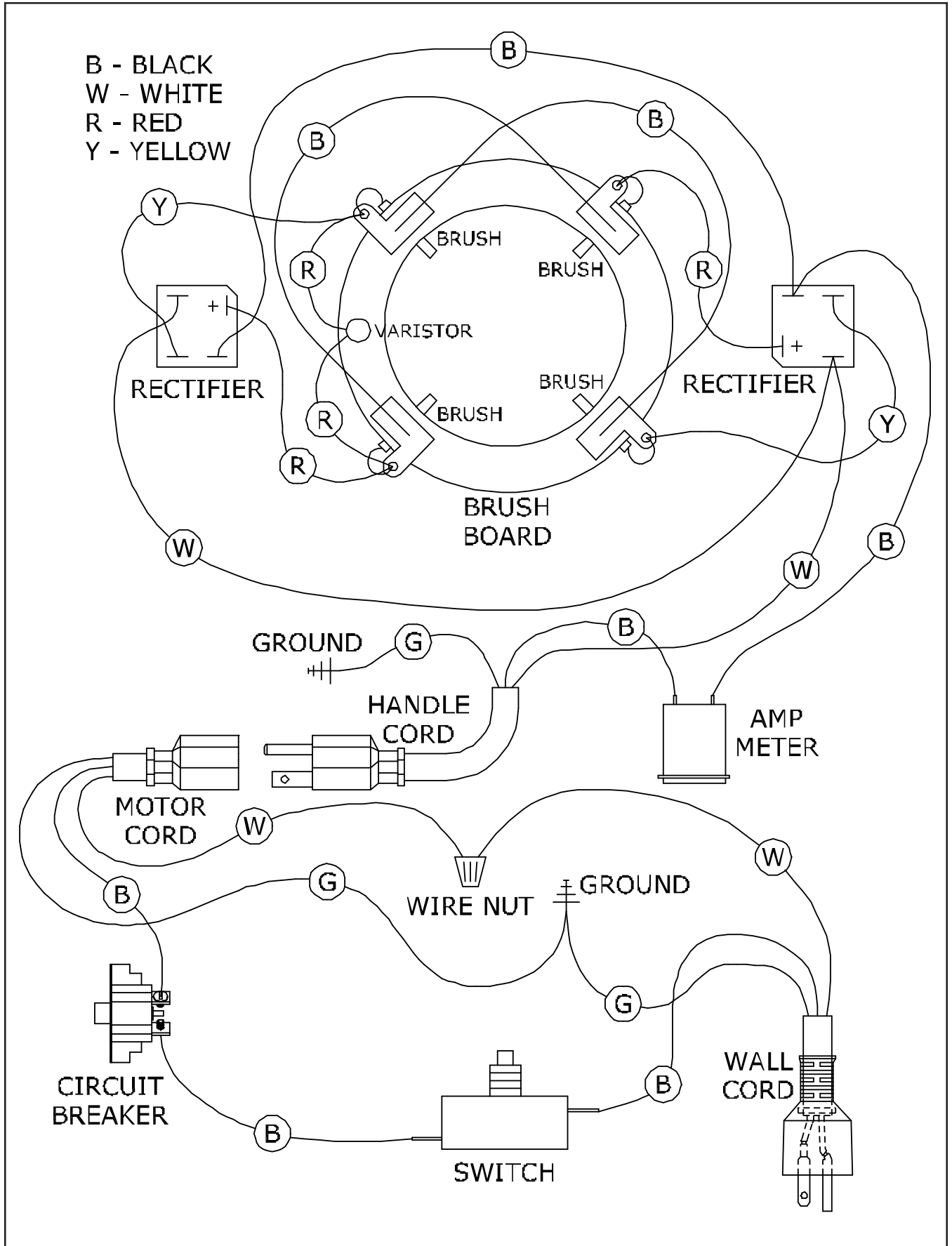
<u>ITEM</u>	<u>PART NO.</u>	<u>PART DESCRIPTION</u>	<u>QTY.</u>
401	5297513	BASE - SKIRT	1
402	5296619	CASTER TRIM ASSEMBLY - SEE PRIOR PAGE FOR COMPONENT PARTS	1
403	9120950	1/4 X 1 1/4 FENDER WASHER (PACK OF 10)	3
404	9120880	1/4 SPLIT LOCK WASHER (PACK OF 10)	3
405	9121050	1/4-20 X 1 1/4 SOCKET HEAD CAP SCREW	3
406	5294248	FLEXABLE PAD DRIVER ASSEMBLY	1
407	9123105	3/4 I.D. X 1 1/4 O.D. X .071/.082 THICK FLAT WASHER (11 GAGE)	2
408	9121985	13/32 I.D. X 1 O.D. X .12 THICK FLAT WASHER (11 GAGE)	1
409	-----	PAD - SEE ACCESSORIES PAGE FOR OPTIONS	1
410	5990731	SPRING CLIP PAD HOLDER SET - INCLUDES:	1
411	9120506	#8 X 5/8 PAN HEAD SHEET METAL SCREW	3
412	9121490	5/16-24 X 7/8 HEX BOLT (PACK OF 2)	1
413	9121985	13/32 I.D. X 1 O.D. X .12 THICK FLAT WASHER (11 GAGE)	1
414	5297619	SHROUD ASSEMBLY - INCLUDES:	1
415	5091281	BUMPER - 23 INCH	1
416	9120850	1/4-20 X 5/16 SET SCREW - KNURL POINT (PACK OF 2)	2
417	5297556	PIVOT BAR	1
418	9122715	1/2-20 X 5 1/2 HEX BOLT	2
419	9122450	17/32 I.D. X 1 1/2 O.D. X .074/.121 THICK FLAT WASHER (1/2) (PK 5)	2
420	5090491	WHEEL DECAL	2
421	5092591	WHEEL - 5" WITH PLASTIC BEARING	2
422	5390811	1/2 I.D. X 1 O.D. X .07 THICK FLAT WASHER - NYLATRON	2
423	9122705	1/2 I.D. X 3/4 O.D. X .01 THICK - 1 WAVE SPRING WASHER (1/2) (PK 2)	2
424	9122705	1/2 I.D. X 3/4 O.D. X .01 THICK - 1 WAVE SPRING WASHER (1/2) (PK 2)	2
425	5390026	HANDLE BRACE	2
426	5390811	1/2 I.D. X 1 O.D. X .07 THICK FLAT WASHER - NYLATRON	2
427	9122690	1/2-20 HEX NUT WITH NY-LOK INSERT - THIN	2
428	9120850	1/4-20 X 5/16 SET SCREW - KNURL POINT (PACK OF 2)	2

BASE ASSEMBLY - LOWER



<u>PART NO.</u>	<u>PART DESCRIPTION</u>	<u>QTY.</u>
3290671	PUSH ON TERMINAL - #BB-8141	2
5297841	AMP METER WITH HARDWARE	1
5390211	SWITCH	1
5390361	SWITCH INSULATOR	1
5391321	WIRE NUT, ORANGE-#30-073 IDEAL	1
0294031	# 8 RING TERMINAL 16-14 GAGE	1
0298981	# 10 RING TERMINAL 16-14 GAGE	1
5490441	BREAKER LEAD - INSULATION	1
5490451	CIRCUIT BREAKER LEAD - 4" WITH TERMINALS	1
5490861	HANDLE CORD	1
5293791	CORD - 75 FEET - 14-3 ST	1
5091569	CORD - 50 FEET WITH TERMINALS - OPTIONAL	1
5091671	STRAIN RELIEF METAL	1
5390261	STRAIN RELIEF NUT	3
5092371	CORD CLAMP, #1002-545 EVERLOCK	1
5091661	CORD CLAMP	1
5298351	MOTOR 115 VOLT 2500	1
5991731	COMMUTATOR BRACKET COVER	1
5298441	COMMUTATOR BRACKET ASSEMBLY WITH BRUSH, BOARD, LEADS	1
5298451	COMMUTATOR BRACKET MACHINED	1
5295071	BRUSH BOARD ASSEMBLY WITH DETECTORS, AND LEADS, INCLUDES:	1
5293651	CARBON BRUSH	4
2797571	BRUSH SPRING	4
9120600	10-24 X 1/2 SELF TAPPING SCREW	5
5991701	THRU BOLT	2
5298501	BRACKET - BOTTOM END	1
5298431	ARMATURE ASSEMBLY WITH BEARINGS - INCLUDES:	1
5991541	BEARING - BOTTOM END	1
9120827	3/16 SQUARE X 1 LONG KEY	1
5991551	BEARING - TOP END	1
5991741	HELICAL WASHER	1
5991521	STATOR FRAME ASSEMBLY - WITH CLIPS AND MAGNETS	1
5991661	8-32 X 1.125 MOUNTING SCREW	2
5991671	M8 FLAT WASHER - BRASS	2
5492741	RECTIFIER	2
5991681	HEX NUT WITH STAR LOCK WASHER	2
5298461	STRAIN RELIEF	1
5298491	LEAD ASSEMBLY AMP METER	2
5298481	LEAD ASSEMBLY MOTOR CORD	1
5991591	STRAIN RELIEF	1

WIRE DIAGRAM



ACCESSORIES



PART NO. PART DESCRIPTION

NOTE:	ALL PADS COME 5 (FIVE) PADS PER CASE
7992051	20" LITE BLUE POLISH / BURNISH PAD - FOR SOFT FINISH
7992061	20" LITE HAIR BURNISH PAD - FOR ALL FINISHES
7992081	20" ULTRA HAIR HARD FINISH PAD - FOR HARD FINISH
7992091	20" ULTIMATE HAIR PAD - HARD FINISH AGGRESSIVE BURNISHING
7992021	20" GREEN SCRUB PAD - HEAVY FINISH REMOVAL
7992001	20" BLACK STRIP PAD - REMOVES FINISH COMPLETELY
7992011	20" BROWN STRIP PAD - REMOVES FINISH COMPLETELY



NSS ® Enterprises, Inc.

3115 Frenchmens Road, Toledo, Ohio 43607
PHONE (419) 531-2121 FAX (419) 531-3761

® **NSS ® Enterprises, Inc. European Distribution Centre**
Unit II, Pinfold Trading Estate * 55 Nottingham Road
STAPLEFORD, NOTTINGHAM NG9 8AD ENGLAND U.K.
PHONE: (44) 0115 939 1568 * FAX: (44) 0115 949 0615